



ELECTRONIC COPY

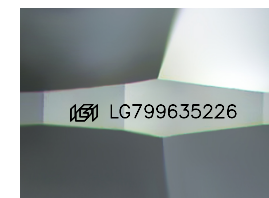
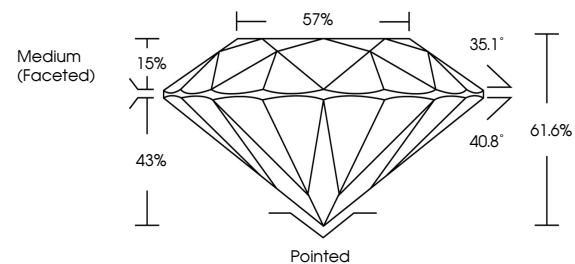
LG799635226
Report verification at igi.org



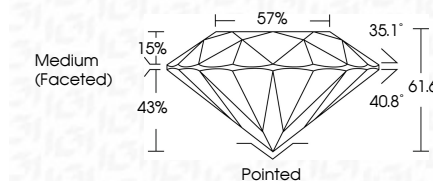
June 11, 2026
IGI Report Number **LG799635226**
Description **LABORATORY GROWN DIAMOND**
Shape and Cutting Style **ROUND BRILLIANT**
Measurements **7.39 - 7.45 X 4.57 MM**
GRADING RESULTS
Carat Weight **1.54 CARAT**
Color Grade **G**
Clarity Grade **VS 1**
Cut Grade **IDEAL**

June 11, 2026
IGI Report Number **LG799635226**
Description **LABORATORY GROWN DIAMOND**
Shape and Cutting Style **ROUND BRILLIANT**
Measurements **7.39 - 7.45 X 4.57 MM**

PROPORTIONS



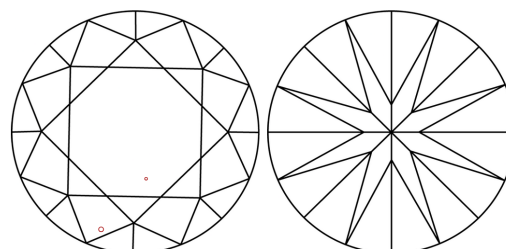
Sample Image Used



GRADING RESULTS

Carat Weight **1.54 CARAT**
Color Grade **G**
Clarity Grade **VS 1**
Cut Grade **IDEAL**

CLARITY CHARACTERISTICS



KEY TO SYMBOLS

Red symbols indicate internal characteristics.
Green symbols indicate external characteristics.

ADDITIONAL GRADING INFORMATION

Polish **EXCELLENT**
Symmetry **EXCELLENT**
Fluorescence **NONE**
Inscription(s) **IGI LG799635226**

COLOR

D E F G H I J Faint Very Light Light

CLARITY

FL	IF	VS ¹⁻²	VS ¹⁻²	SI ¹⁻²	I ¹⁻³
Flawless	Internally Flawless	Very Very Slightly Included	Very Slightly Included	Slightly Included	Included

ADDITIONAL GRADING INFORMATION

Polish **EXCELLENT**
Symmetry **EXCELLENT**
Fluorescence **NONE**
Inscription(s) **IGI LG799635226**
Comments: This Laboratory Grown Diamond was created by Chemical Vapor Deposition (CVD) growth process.
Type IIa

Comments: This Laboratory Grown Diamond was created by Chemical Vapor Deposition (CVD) growth process.
Type IIa



June 11, 2026
IGI Report No LG799635226
ROUND BRILLIANT
1.54 CARAT
Color Grade **G**
Clarity Grade **VS 1**
Cut Grade **IDEAL**
Depth **61.6%**
Table **57%**
Girdle **Medium (Faceted)**
Culet **Pointed**
Polish **EXCELLENT**
Symmetry **EXCELLENT**
Fluorescence **NONE**
Inscription(s) **IGI LG799635226**
Comments: This Laboratory Grown Diamond was created by Chemical Vapor Deposition (CVD) growth process.
Type IIa