



ELECTRONIC COPY

LG799635212
Report verification at igi.org



June 15, 2026
IGI Report Number **LG799635212**
Description **LABORATORY GROWN DIAMOND**
Shape and Cutting Style **OLD EUROPEAN CUT**
Measurements **8.22 - 8.25 X 4.66 MM**
GRADING RESULTS
Carat Weight **2.01 CARATS**
Color Grade **FANCY LIGHT BROWN**
Clarity Grade **VVS 2**

June 15, 2026
IGI Report Number **LG799635212**
Description **LABORATORY GROWN DIAMOND**
Shape and Cutting Style **OLD EUROPEAN CUT**
Measurements **8.22 - 8.25 X 4.66 MM**

GRADING RESULTS

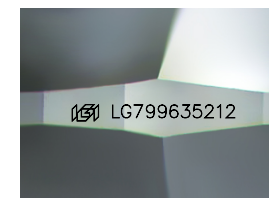
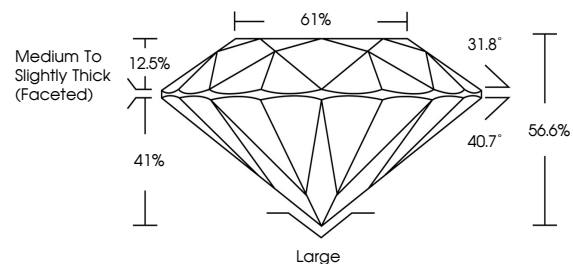
Carat Weight **2.01 CARATS**
Color Grade **FANCY LIGHT BROWN**
Clarity Grade **VVS 2**

ADDITIONAL GRADING INFORMATION

Polish **VERY GOOD**
Symmetry **VERY GOOD**
Fluorescence **NONE**
Inscription(s) **IGI LG799635212**

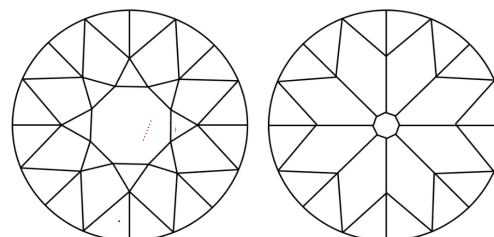
Comments: This Laboratory Grown Diamond was created by Chemical Vapor Deposition (CVD) growth process.

PROPORTIONS



Sample Image Used

CLARITY CHARACTERISTICS



KEY TO SYMBOLS

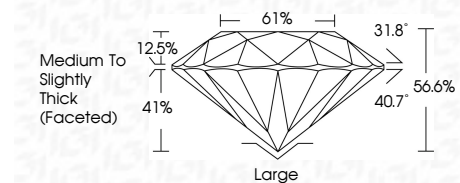
Red symbols indicate internal characteristics.
Green symbols indicate external characteristics.

COLOR

D E F G H I J Faint Very Light Light

CLARITY

FL	IF	VVS ¹⁻²	VS ¹⁻²	SI ¹⁻²	I ¹⁻³
Flawless	Internally Flawless	Very Very Slightly Included	Very Slightly Included	Slightly Included	Included



ADDITIONAL GRADING INFORMATION

Polish **VERY GOOD**
Symmetry **VERY GOOD**
Fluorescence **NONE**
Inscription(s) **IGI LG799635212**
Comments: This Laboratory Grown Diamond was created by Chemical Vapor Deposition (CVD) growth process.



IGI



June 15, 2026
IGI Report No **LG799635212**
OLD EUROPEAN CUT
8.22 - 8.25 X 4.66 MM
Carat Weight **2.01 CARATS**
Color Grade **FANCY LIGHT BROWN**
Clarity Grade **VVS 2**
Depth **56.6%**
Table **61%**
Girdle **Medium to Slightly Thick (Faceted)**
Culet **Large**
Polish **VERY GOOD**
Symmetry **VERY GOOD**
Fluorescence **NONE**
Inscription(s) **IGI LG799635212**
Comments: This Laboratory Grown Diamond was created by Chemical Vapor Deposition (CVD) growth process.