



ELECTRONIC COPY

LG799635202
Report verification at igi.org



June 15, 2026

IGI Report Number **LG799635202**

Description **LABORATORY GROWN DIAMOND**

Shape and Cutting Style **ROUND BRILLIANT**

Measurements **7.46 - 7.50 X 4.56 MM**

GRADING RESULTS

Carat Weight **1.57 CARAT**

Color Grade **M**

Clarity Grade **VS 1**

Cut Grade **IDEAL**

June 15, 2026
IGI Report Number **LG799635202**
Description **LABORATORY GROWN DIAMOND**
Shape and Cutting Style **ROUND BRILLIANT**
Measurements **7.46 - 7.50 X 4.56 MM**

GRADING RESULTS

Carat Weight **1.57 CARAT**

Color Grade **M**

Clarity Grade **VS 1**

Cut Grade **IDEAL**

ADDITIONAL GRADING INFORMATION

Polish **VERY GOOD**

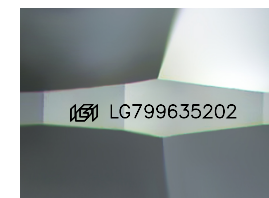
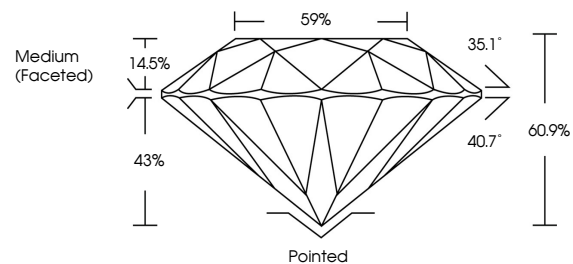
Symmetry **VERY GOOD**

Fluorescence **VERY SLIGHT**

Inscription(s) **LG799635202**

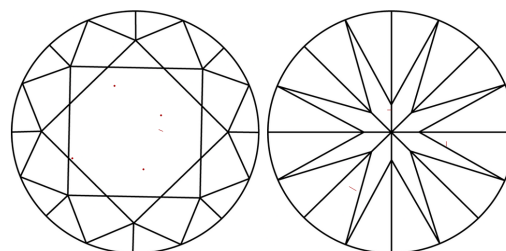
Comments: This Laboratory Grown Diamond was created by Chemical Vapor Deposition (CVD) growth process.
Type IIa
Faint Brown

PROPORTIONS



Sample Image Used

CLARITY CHARACTERISTICS



KEY TO SYMBOLS

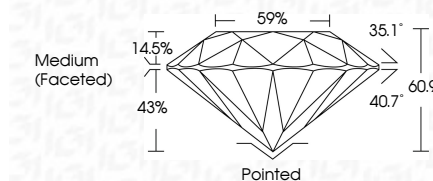
Red symbols indicate internal characteristics.
Green symbols indicate external characteristics.

COLOR

D E F G H I J Faint Very Light Light

CLARITY

FL	IF	VS ¹⁻²	VS ¹⁻²	SI ¹⁻²	I ¹⁻³
Flawless	Internally Flawless	Very Very Slightly Included	Very Slightly Included	Slightly Included	Included



ADDITIONAL GRADING INFORMATION

Polish **VERY GOOD**

Symmetry **VERY GOOD**

Fluorescence **VERY SLIGHT**

Inscription(s) **LG799635202**

Comments: This Laboratory Grown Diamond was created by Chemical Vapor Deposition (CVD) growth process.
Type IIa
Faint Brown



June 15, 2026
IGI Report No LG799635202
ROUND BRILLIANT
7.46 - 7.50 X 4.56 MM
1.57 CARAT
M
VS 1
IDEAL
60.9%
59%
Medium (Faceted)

Culet Pointed
Polish VERY GOOD
Symmetry VERY GOOD
Fluorescence VERY SLIGHT
Inscription(s) IGI LG799635202

Comments: This Laboratory Grown Diamond was created by Chemical Vapor Deposition (CVD) growth process.
Type IIa
Faint Brown