



ELECTRONIC COPY

LG799635201
Report verification at igi.org



June 15, 2026

IGI Report Number **LG799635201**

Description **LABORATORY GROWN DIAMOND**

Shape and Cutting Style **CUT CORNERED
RECTANGULAR MODIFIED
BRILLIANT**

Measurements **7.64 X 5.52 X 3.69 MM**

GRADING RESULTS

Carat Weight **1.51 CARAT**

Color Grade **FANCY LIGHT BROWN**

Clarity Grade **VVS 2**

LABORATORY GROWN DIAMOND REPORT

June 15, 2026

IGI Report Number **LG799635201**

Description **LABORATORY GROWN DIAMOND**

Shape and Cutting Style **CUT CORNERED RECTANGULAR
MODIFIED BRILLIANT**

Measurements **7.64 X 5.52 X 3.69 MM**

GRADING RESULTS

Carat Weight **1.51 CARAT**

Color Grade **FANCY LIGHT BROWN**

Clarity Grade **VVS 2**

ADDITIONAL GRADING INFORMATION

Polish **EXCELLENT**

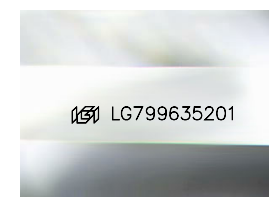
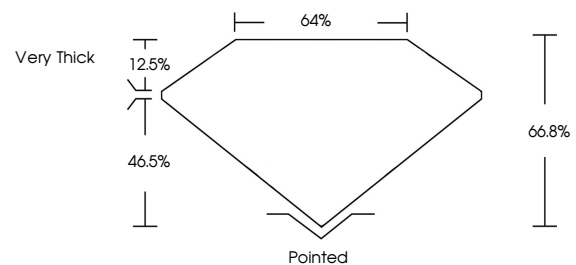
Symmetry **EXCELLENT**

Fluorescence **NONE**

Inscription(s) **IGI LG799635201**

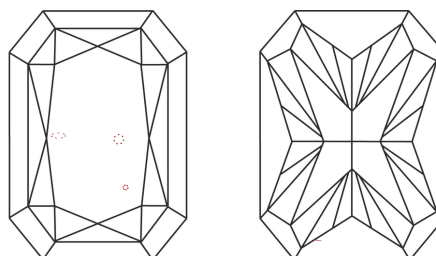
Comments: This Laboratory Grown Diamond was created by Chemical Vapor Deposition (CVD) growth process.

PROPORTIONS



Sample Image Used

CLARITY CHARACTERISTICS



KEY TO SYMBOLS

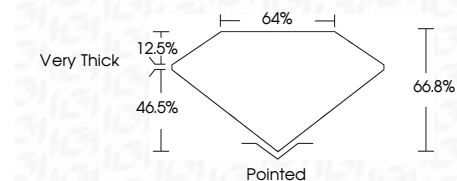
Red symbols indicate internal characteristics.
Green symbols indicate external characteristics.

COLOR

D E F G H I J Faint Very Light Light

CLARITY

FL	IF	VVS ¹⁻²	VS ¹⁻²	SI ¹⁻²	I ¹⁻³
Flawless	Internally Flawless	Very Very Slightly Included	Very Slightly Included	Slightly Included	Included



ADDITIONAL GRADING INFORMATION

Polish **EXCELLENT**

Symmetry **EXCELLENT**

Fluorescence **NONE**

Inscription(s) **IGI LG799635201**

Comments: This Laboratory Grown Diamond was created by Chemical Vapor Deposition (CVD) growth process.



IGI



June 15, 2026
IGI Report No LG799635201
CUT CORNERED RECT. MODIFIED BRILLIANT

7.64 X 5.52 X 3.69 MM
1.51 CARAT
FANCY LIGHT BROWN
VVS 2
66.8%
46.5%
Very Thick

Pointed
EXCELLENT
EXCELLENT
NONE
IGI LG799635201

Comments: This Laboratory Grown Diamond was created by Chemical Vapor Deposition (CVD) growth process.