



**ELECTRONIC COPY**

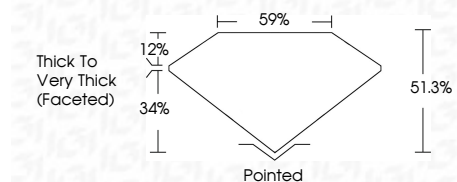
LG799635154  
Report verification at igi.org



June 9, 2026  
IGI Report Number **LG799635154**  
Description **LABORATORY GROWN DIAMOND**  
Shape and Cutting Style **HEART MODIFIED BRILLIANT**  
Measurements **7.56 X 8.59 X 4.41 MM**

**GRADING RESULTS**

Carat Weight **2.09 CARATS**  
Color Grade **FANCY VIVID PINK**  
Clarity Grade **VVS 2**

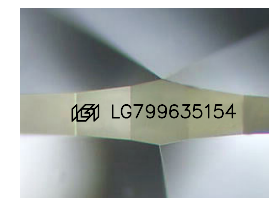


**ADDITIONAL GRADING INFORMATION**

Polish **EXCELLENT**  
Symmetry **EXCELLENT**  
Fluorescence **SLIGHT**  
Inscription(s) **IGI LG799635154**  
Comments: This Laboratory Grown Diamond was created by Chemical Vapor Deposition (CVD) growth process.

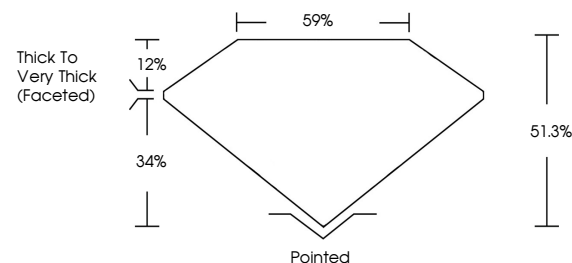


June 9, 2026  
IGI Report No **LG799635154**  
**HEART MODIFIED BRILLIANT**  
7.56 X 8.59 X 4.41 MM  
2.09 CARATS  
FANCY VIVID PINK  
VVS 2  
51.0%  
59%  
Thick to Very Thick (Faceted)  
Pointed  
EXCELLENT  
EXCELLENT  
SLIGHT  
IGI LG799635154  
Comments: This Laboratory Grown Diamond was created by Chemical Vapor Deposition (CVD) growth process.

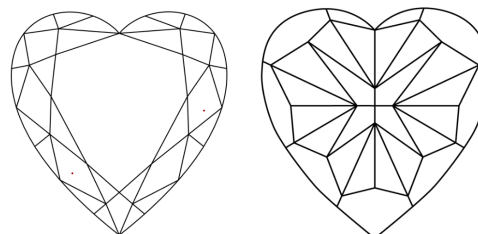


Sample Image Used

**PROPORTIONS**



**CLARITY CHARACTERISTICS**



**KEY TO SYMBOLS**

Red symbols indicate internal characteristics.  
Green symbols indicate external characteristics.

**COLOR**

D E F G H I J Faint Very Light Light

**CLARITY**

FL	IF	VVS <sup>1-2</sup>	VS <sup>1-2</sup>	SI <sup>1-2</sup>	I <sup>1-3</sup>
Flawless	Internally Flawless	Very Very Slightly Included	Very Slightly Included	Slightly Included	Included

