



**ELECTRONIC COPY**

LG799635123  
Report verification at igi.org



June 9, 2026  
IGI Report Number **LG799635123**  
Description **LABORATORY GROWN DIAMOND**  
Shape and Cutting Style **CUT CORNERED  
RECTANGULAR MODIFIED  
BRILLIANT**  
Measurements **8.13 X 6.24 X 4.53 MM**  
**GRADING RESULTS**  
Carat Weight **2.21 CARATS**  
Color Grade **FANCY VIVID PINK**  
Clarity Grade **VVS 1**

**LABORATORY GROWN DIAMOND REPORT**

June 9, 2026  
IGI Report Number **LG799635123**  
Description **LABORATORY GROWN DIAMOND**  
Shape and Cutting Style **CUT CORNERED RECTANGULAR  
MODIFIED BRILLIANT**  
Measurements **8.13 X 6.24 X 4.53 MM**

**GRADING RESULTS**

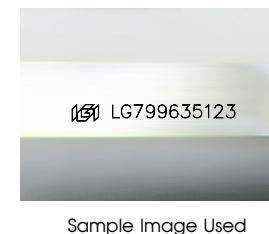
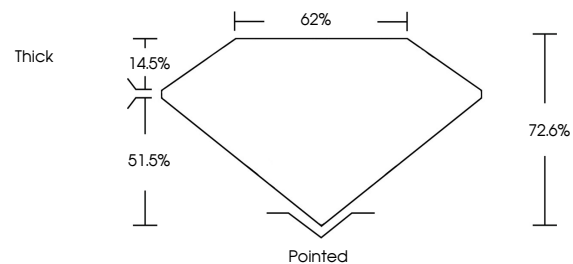
Carat Weight **2.21 CARATS**  
Color Grade **FANCY VIVID PINK**  
Clarity Grade **VVS 1**

**ADDITIONAL GRADING INFORMATION**

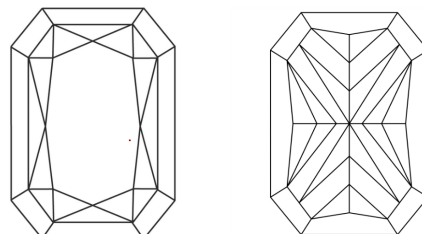
Polish **EXCELLENT**  
Symmetry **EXCELLENT**  
Fluorescence **SLIGHT**  
Inscription(s) **IGI LG799635123**

Comments: This Laboratory Grown Diamond was created by Chemical Vapor Deposition (CVD) growth process.  
Indications of post-growth treatment.

**PROPORTIONS**



**CLARITY CHARACTERISTICS**



**KEY TO SYMBOLS**

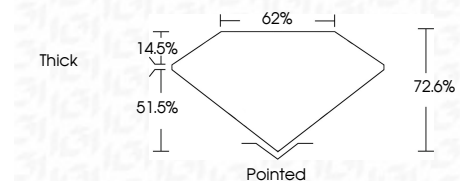
Red symbols indicate internal characteristics.  
Green symbols indicate external characteristics.

**COLOR**

D E F G H I J Faint Very Light Light

**CLARITY**

FL	IF	VVS <sup>1-2</sup>	VS <sup>1-2</sup>	SI <sup>1-2</sup>	I <sup>1-3</sup>
Flawless	Internally Flawless	Very Very Slightly Included	Very Slightly Included	Slightly Included	Included



**ADDITIONAL GRADING INFORMATION**

Polish **EXCELLENT**  
Symmetry **EXCELLENT**  
Fluorescence **SLIGHT**  
Inscription(s) **IGI LG799635123**  
Comments: This Laboratory Grown Diamond was created by Chemical Vapor Deposition (CVD) growth process.  
Indications of post-growth treatment.



June 9, 2026  
IGI Report No LG799635123  
CUT CORNERED RECT. MODIFIED BRILLIANT  
8.13 X 6.24 X 4.53 MM  
2.21 CARATS  
FANCY VIVID PINK  
VVS 1  
72.6%  
62%  
Thick  
Pointed  
EXCELLENT  
EXCELLENT  
SLIGHT  
IGI LG799635123  
Comments: This Laboratory Grown Diamond was created by Chemical Vapor Deposition (CVD) growth process.  
Indications of post-growth treatment.