



ELECTRONIC COPY

LABORATORY GROWN DIAMOND REPORT

June 9, 2026  
IGI Report Number LG799635105  
Description LABORATORY GROWN DIAMOND  
Shape and Cutting Style CUT CORNERED RECTANGULAR MODIFIED BRILLIANT  
Measurements 6.68 X 4.69 X 3.27 MM

GRADING RESULTS

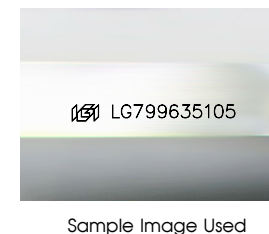
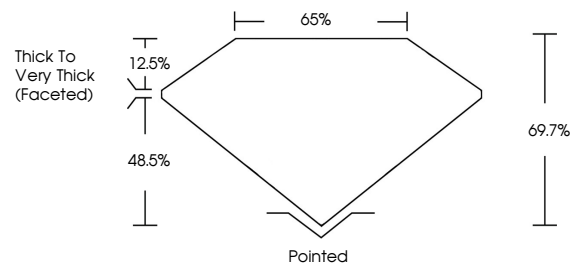
Carat Weight 1.01 CARAT  
Color Grade FANCY VIVID PINK  
Clarity Grade VS 2

ADDITIONAL GRADING INFORMATION

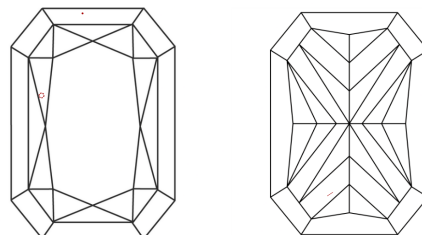
Polish VERY GOOD  
Symmetry EXCELLENT  
Fluorescence SLIGHT  
Inscription(s) LG799635105

Comments: This Laboratory Grown Diamond was created by Chemical Vapor Deposition (CVD) growth process.  
Indications of post-growth treatment.

PROPORTIONS



CLARITY CHARACTERISTICS



KEY TO SYMBOLS

Red symbols indicate internal characteristics.  
Green symbols indicate external characteristics.

COLOR

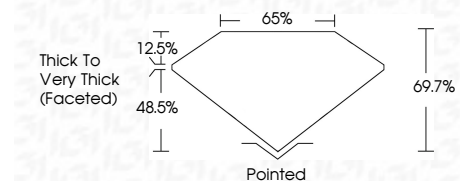
D E F G H I J Faint Very Light Light

CLARITY

FL IF VS<sup>1-2</sup> VS<sup>1-2</sup> SI<sup>1-2</sup> I<sup>1-3</sup>  
Flawless Internally Flawless Very Very Slightly Included Very Slightly Included Slightly Included Included



June 9, 2026  
IGI Report Number LG799635105  
Description LABORATORY GROWN DIAMOND  
Shape and Cutting Style CUT CORNERED RECTANGULAR MODIFIED BRILLIANT  
Measurements 6.68 X 4.69 X 3.27 MM  
GRADING RESULTS  
Carat Weight 1.01 CARAT  
Color Grade FANCY VIVID PINK  
Clarity Grade VS 2



ADDITIONAL GRADING INFORMATION

Polish VERY GOOD  
Symmetry EXCELLENT  
Fluorescence SLIGHT  
Inscription(s) LG799635105  
Comments: This Laboratory Grown Diamond was created by Chemical Vapor Deposition (CVD) growth process.  
Indications of post-growth treatment.



June 9, 2026  
IGI Report No LG799635105  
CUT CORNERED RECT. MODIFIED BRILLIANT  
6.68 X 4.69 X 3.27 MM  
1.01 CARAT  
FANCY VIVID PINK  
VS 2  
69.7%  
65%  
Thick to Very Thick (Faceted)  
Pointed  
VERY GOOD  
EXCELLENT  
SLIGHT  
Inscription(s) LG799635105  
Comments: This Laboratory Grown Diamond was created by Chemical Vapor Deposition (CVD) growth process.  
Indications of post-growth treatment.