



**ELECTRONIC COPY**

LG799634810  
Report verification at igi.org



June 1, 2026  
IGI Report Number **LG799634810**  
Description **LABORATORY GROWN DIAMOND**  
Shape and Cutting Style **ROUND BRILLIANT**  
Measurements **7.24 - 7.28 X 4.57 MM**  
**GRADING RESULTS**  
Carat Weight **1.49 CARAT**  
Color Grade **LIGHT BROWN**  
Clarity Grade **VS 1**  
Cut Grade **EXCELLENT**

June 1, 2026  
IGI Report Number **LG799634810**  
Description **LABORATORY GROWN DIAMOND**  
Shape and Cutting Style **ROUND BRILLIANT**  
Measurements **7.24 - 7.28 X 4.57 MM**

**GRADING RESULTS**

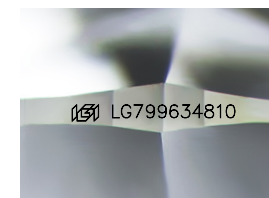
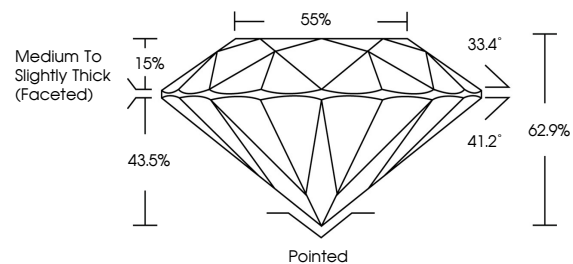
Carat Weight **1.49 CARAT**  
Color Grade **LIGHT BROWN**  
Clarity Grade **VS 1**  
Cut Grade **EXCELLENT**

**ADDITIONAL GRADING INFORMATION**

Polish **VERY GOOD**  
Symmetry **VERY GOOD**  
Fluorescence **VERY SLIGHT**  
Inscription(s) **LG799634810**

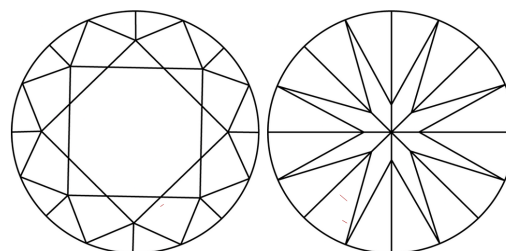
Comments: This Laboratory Grown Diamond was created by Chemical Vapor Deposition (CVD) growth process.  
Type IIa

**PROPORTIONS**



Sample Image Used

**CLARITY CHARACTERISTICS**



**KEY TO SYMBOLS**

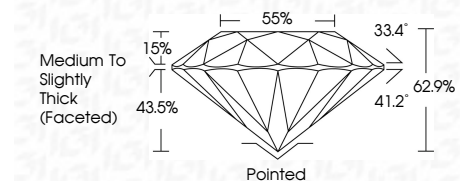
Red symbols indicate internal characteristics.  
Green symbols indicate external characteristics.

**COLOR**

D E F G H I J Faint Very Light Light

**CLARITY**

FL	IF	VS <sup>1-2</sup>	VS <sup>1-2</sup>	SI <sup>1-2</sup>	I <sup>1-3</sup>
Flawless	Internally Flawless	Very Very Slightly Included	Very Slightly Included	Slightly Included	Included



**ADDITIONAL GRADING INFORMATION**

Polish **VERY GOOD**  
Symmetry **VERY GOOD**  
Fluorescence **VERY SLIGHT**  
Inscription(s) **LG799634810**  
Comments: This Laboratory Grown Diamond was created by Chemical Vapor Deposition (CVD) growth process.  
Type IIa



**IGI**



June 1, 2026  
IGI Report No **LG799634810**  
**ROUND BRILLIANT**  
**1.49 CARAT**  
Carat Weight  
**LIGHT BROWN**  
Color Grade  
**VS 1**  
Clarity Grade  
**EXCELLENT**  
Cut Grade  
**62.9%**  
Depth  
**85%**  
Table  
**Medium To Slightly Thick (Faceted)**  
Girdle  
**Pointed**  
Culet  
**VERY GOOD**  
Polish  
**VERY GOOD**  
Symmetry  
**VERY SLIGHT**  
Fluorescence  
**VS 1**  
Inscription(s)  
 **LG799634810**

Comments: This Laboratory Grown Diamond was created by Chemical Vapor Deposition (CVD) growth process.  
Type IIa