



ELECTRONIC COPY

LG799634806
Report verification at igi.org



June 1, 2026

IGI Report Number **LG799634806**

Description **LABORATORY GROWN DIAMOND**

Shape and Cutting Style **OLD EUROPEAN CUT**

Measurements **6.65 - 6.68 X 3.83 MM**

GRADING RESULTS

Carat Weight **1.10 CARAT**

Color Grade **LIGHT BROWN**

Clarity Grade **VS 1**

June 1, 2026
IGI Report Number **LG799634806**
Description **LABORATORY GROWN DIAMOND**
Shape and Cutting Style **OLD EUROPEAN CUT**
Measurements **6.65 - 6.68 X 3.83 MM**

GRADING RESULTS

Carat Weight **1.10 CARAT**

Color Grade **LIGHT BROWN**

Clarity Grade **VS 1**

ADDITIONAL GRADING INFORMATION

Polish **VERY GOOD**

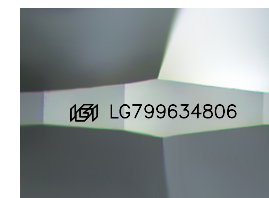
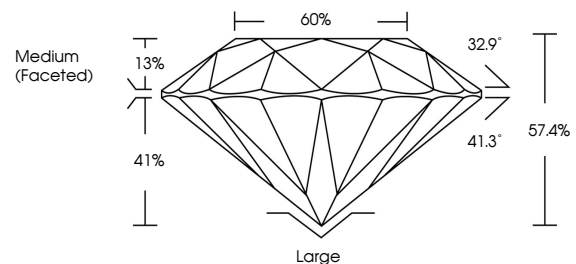
Symmetry **EXCELLENT**

Fluorescence **VERY SLIGHT**

Inscription(s) **IGI LG799634806**

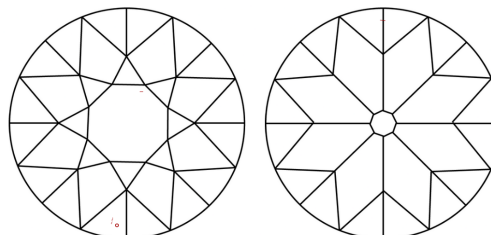
Comments: This Laboratory Grown Diamond was created by Chemical Vapor Deposition (CVD) growth process.
Type IIa

PROPORTIONS



Sample Image Used

CLARITY CHARACTERISTICS



KEY TO SYMBOLS

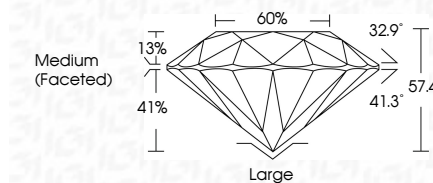
Red symbols indicate internal characteristics.
Green symbols indicate external characteristics.

COLOR

D E F G H I J Faint Very Light Light

CLARITY

| FL | IF | VS ¹⁻² | VS ¹⁻² | SI ¹⁻² | I ¹⁻³ |
|----------|---------------------|-----------------------------|------------------------|-------------------|------------------|
| Flawless | Internally Flawless | Very Very Slightly Included | Very Slightly Included | Slightly Included | Included |



ADDITIONAL GRADING INFORMATION

Polish **VERY GOOD**

Symmetry **EXCELLENT**

Fluorescence **VERY SLIGHT**

Inscription(s) **IGI LG799634806**

Comments: This Laboratory Grown Diamond was created by Chemical Vapor Deposition (CVD) growth process.
Type IIa



IGI



June 1, 2026
IGI Report No. **LG799634806**
OLD EUROPEAN CUT
6.65 - 6.68 X 3.83 MM
Carat Weight **1.10 CARAT**
Color Grade **LIGHT BROWN**
Clarity Grade **VS 1**
Table **60%**
Girdle **Medium (Faceted)**
Culet **Large**
Polish **VERY GOOD**
Symmetry **EXCELLENT**
Fluorescence **VERY SLIGHT**
Inscription(s) **IGI LG799634806**

Comments: This Laboratory Grown Diamond was created by Chemical Vapor Deposition (CVD) growth process.
Type IIa