



ELECTRONIC COPY

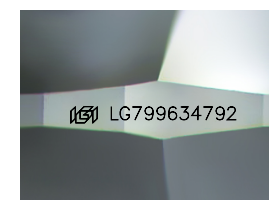
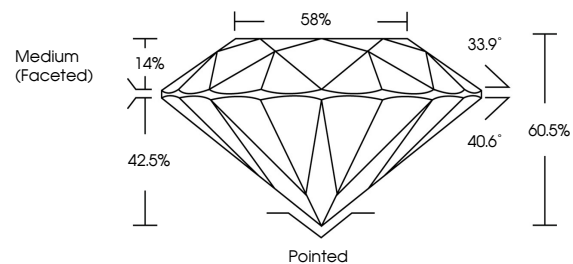
LG799634792
Report verification at igi.org



June 1, 2026
IGI Report Number **LG799634792**
Description **LABORATORY GROWN DIAMOND**
Shape and Cutting Style **ROUND BRILLIANT**
Measurements **6.46 - 6.48 X 3.92 MM**
GRADING RESULTS
Carat Weight **1.01 CARAT**
Color Grade **LIGHT BROWN**
Clarity Grade **VS 2**
Cut Grade **IDEAL**

June 1, 2026
IGI Report Number **LG799634792**
Description **LABORATORY GROWN DIAMOND**
Shape and Cutting Style **ROUND BRILLIANT**
Measurements **6.46 - 6.48 X 3.92 MM**

PROPORTIONS

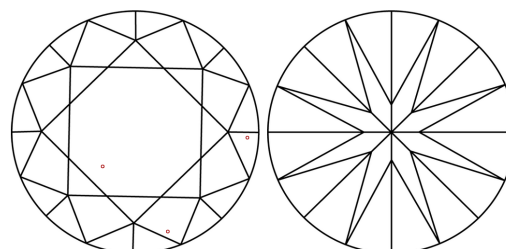


Sample Image Used

GRADING RESULTS

Carat Weight **1.01 CARAT**
Color Grade **LIGHT BROWN**
Clarity Grade **VS 2**
Cut Grade **IDEAL**

CLARITY CHARACTERISTICS



KEY TO SYMBOLS

Red symbols indicate internal characteristics.
Green symbols indicate external characteristics.

ADDITIONAL GRADING INFORMATION

Polish **EXCELLENT**
Symmetry **EXCELLENT**
Fluorescence **VERY SLIGHT**
Inscription(s) **IGI LG799634792**

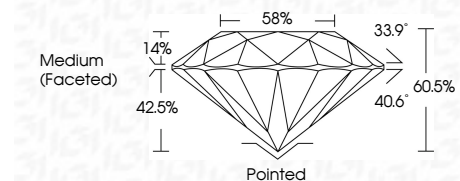
Comments: This Laboratory Grown Diamond was created by Chemical Vapor Deposition (CVD) growth process.
Type IIa

COLOR

D E F G H I J Faint Very Light Light

CLARITY

FL	IF	VS ¹⁻²	VS ¹⁻²	SI ¹⁻²	I ¹⁻³
Flawless	Internally Flawless	Very Very Slightly Included	Very Slightly Included	Slightly Included	Included



ADDITIONAL GRADING INFORMATION

Polish **EXCELLENT**
Symmetry **EXCELLENT**
Fluorescence **VERY SLIGHT**
Inscription(s) **IGI LG799634792**
Comments: This Laboratory Grown Diamond was created by Chemical Vapor Deposition (CVD) growth process.
Type IIa



June 1, 2026
IGI Report No LG799634792
ROUND BRILLIANT
6.46 - 6.48 X 3.92 MM
1.01 CARAT
LIGHT BROWN
Color Grade
VS 2
Clarity Grade
IDEAL
Depth
60.5%
Table
58%
Medium (Faceted)
Cut Grade
Pointed
EXCELLENT
Symmetry
EXCELLENT
Fluorescence
VERY SLIGHT
Inscriptions(s)
IGI LG799634792
Comments: This Laboratory Grown Diamond was created by Chemical Vapor Deposition (CVD) growth process.
Type IIa