



June 9, 2026

IGI Report Number LG799634283

OLD EUROPEAN CUT  
LABORATORY GROWN DIAMOND  
6.02 - 6.04 X 3.78 MM

Carat Weight	0.89 CARAT
Color Grade	D
Clarity Grade	FLAWLESS
Polish	EXCELLENT
Symmetry	EXCELLENT
Fluorescence	NONE
Inscription(s)	IGI LG799634283

Comments: As Grown - No indication of post-growth treatment. This Laboratory Grown Diamond was created by High Pressure High Temperature (HPHT) growth process. Type II

**LABORATORY GROWN DIAMOND REPORT**

June 9, 2026	
IGI Report Number	LG799634283
Description	LABORATORY GROWN DIAMOND
Shape and Cutting Style	OLD EUROPEAN CUT
Measurements	6.02 - 6.04 X 3.78 MM

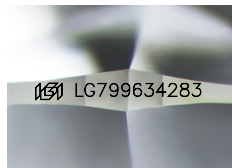
**GRADING RESULTS**

Carat Weight	0.89 CARAT
Color Grade	D
Clarity Grade	FLAWLESS

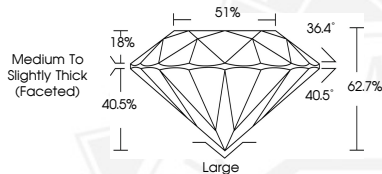
**ADDITIONAL GRADING INFORMATION**

Polish	EXCELLENT
Symmetry	EXCELLENT
Fluorescence	NONE
Inscription(s)	IGI LG799634283

Comments: As Grown - No indication of post-growth treatment. This Laboratory Grown Diamond was created by High Pressure High Temperature (HPHT) growth process. Type II



Sample Image Used



June 9, 2026

IGI Report Number LG799634283

OLD EUROPEAN CUT  
LABORATORY GROWN DIAMOND  
6.02 - 6.04 X 3.78 MM

Carat Weight	0.89 CARAT
Color Grade	D
Clarity Grade	FLAWLESS
Polish	EXCELLENT
Symmetry	EXCELLENT
Fluorescence	NONE
Inscription(s)	IGI LG799634283

Comments: As Grown - No indication of post-growth treatment. This Laboratory Grown Diamond was created by High Pressure High Temperature (HPHT) growth process. Type II



THIS DOCUMENT WAS PRODUCED WITH THE FOLLOWING SECURITY MEASURES: SPECIAL DOCUMENT PAPER, INK SCREENS, WATERMARK, BACKGROUND DESIGNS, HOLOGRAM AND OTHER SECURITY FEATURES NOT LISTED AND DO EXCEED DOCUMENT SECURITY INDUSTRY GUIDELINES.