



**ELECTRONIC COPY**

LG799634275  
Report verification at igi.org



June 8, 2026  
IGI Report Number **LG799634275**  
Description **LABORATORY GROWN DIAMOND**  
Shape and Cutting Style **THREE LEAF CLOVER MIXED CUT**  
Measurements **7.84 X 7.10 X 3.71 MM**  
**GRADING RESULTS**  
Carat Weight **1.11 CARAT**  
Color Grade **D**  
Clarity Grade **VVS 1**

June 8, 2026  
IGI Report Number **LG799634275**  
Description **LABORATORY GROWN DIAMOND**  
Shape and Cutting Style **THREE LEAF CLOVER MIXED CUT**  
Measurements **7.84 X 7.10 X 3.71 MM**

**GRADING RESULTS**

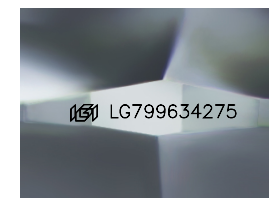
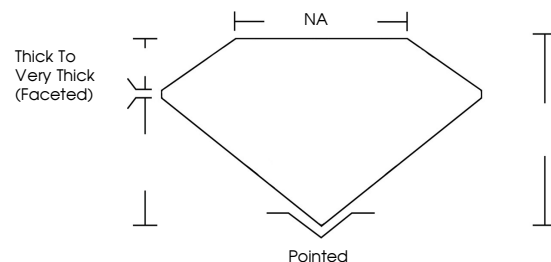
Carat Weight **1.11 CARAT**  
Color Grade **D**  
Clarity Grade **VVS 1**

**ADDITIONAL GRADING INFORMATION**

Polish **EXCELLENT**  
Symmetry **EXCELLENT**  
Fluorescence **NONE**  
Inscription(s) **IGI LG799634275**

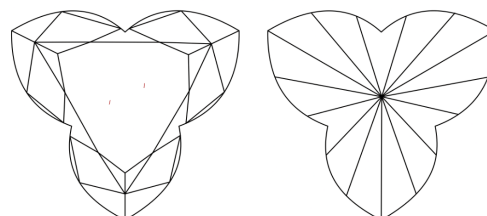
Comments: As Grown - No indication of post-growth treatment.  
This Laboratory Grown Diamond was created by High Pressure High Temperature (HPHT) growth process. Type II

**PROPORTIONS**



Sample Image Used

**CLARITY CHARACTERISTICS**



**KEY TO SYMBOLS**

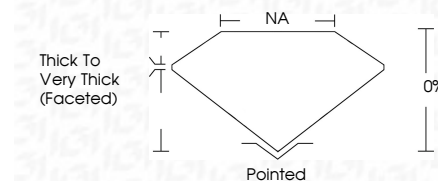
Red symbols indicate internal characteristics.  
Green symbols indicate external characteristics.

**COLOR**

D E F G H I J Faint Very Light Light

**CLARITY**

| FL       | IF                  | VVS <sup>1-2</sup>          | VS <sup>1-2</sup>      | SI <sup>1-2</sup> | I <sup>1-3</sup> |
|----------|---------------------|-----------------------------|------------------------|-------------------|------------------|
| Flawless | Internally Flawless | Very Very Slightly Included | Very Slightly Included | Slightly Included | Included         |



**ADDITIONAL GRADING INFORMATION**

Polish **EXCELLENT**  
Symmetry **EXCELLENT**  
Fluorescence **NONE**  
Inscription(s) **IGI LG799634275**  
Comments: As Grown - No indication of post-growth treatment.  
This Laboratory Grown Diamond was created by High Pressure High Temperature (HPHT) growth process. Type II



June 8, 2026  
IGI Report No LG799634275  
**THREE LEAF CLOVER MIXED CUT**  
7.84 X 7.10 X 3.71 MM  
1.11 CARAT  
D  
VVS 1  
0%  
NA  
Thick to Very Thick (Faceted)  
Pointed  
EXCELLENT  
EXCELLENT  
NONE  
IGI LG799634275  
Comments: As Grown - No indication of post-growth treatment.  
This Laboratory Grown Diamond was created by High Pressure High Temperature (HPHT) growth process. Type II