



ELECTRONIC COPY

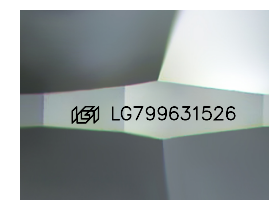
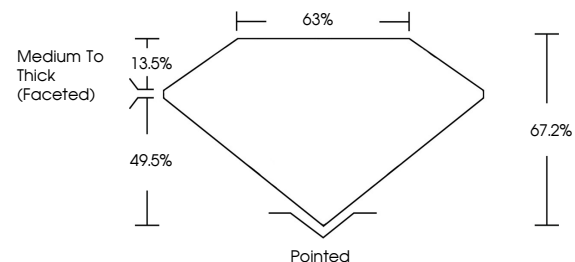
LG799631526
Report verification at igi.org



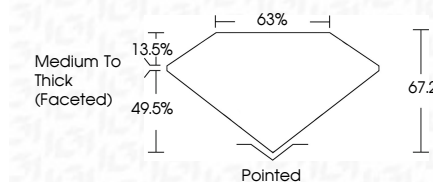
June 23, 2026
IGI Report Number **LG799631526**
Description **LABORATORY GROWN DIAMOND**
Shape and Cutting Style **CUSHION MODIFIED BRILLIANT**
Measurements **6.06 X 5.49 X 3.69 MM**
GRADING RESULTS
Carat Weight **1.02 CARAT**
Color Grade **FANCY VIVID BLUE**
Clarity Grade **VS 2**

June 23, 2026
IGI Report Number **LG799631526**
Description **LABORATORY GROWN DIAMOND**
Shape and Cutting Style **CUSHION MODIFIED BRILLIANT**
Measurements **6.06 X 5.49 X 3.69 MM**

PROPORTIONS



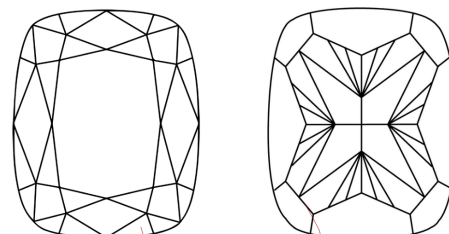
Sample Image Used



GRADING RESULTS

Carat Weight **1.02 CARAT**
Color Grade **FANCY VIVID BLUE**
Clarity Grade **VS 2**

CLARITY CHARACTERISTICS



COLOR

D E F G H I J Faint Very Light Light

CLARITY

FL	IF	VS ¹⁻²	VS ¹⁻²	SI ¹⁻²	I ¹⁻³
Flawless	Internally Flawless	Very Very Slightly Included	Very Slightly Included	Slightly Included	Included

KEY TO SYMBOLS

Red symbols indicate internal characteristics.
Green symbols indicate external characteristics.

ADDITIONAL GRADING INFORMATION

Polish **EXCELLENT**
Symmetry **EXCELLENT**
Fluorescence **NONE**
Inscription(s) **IGI LG799631526**
Comments: This Laboratory Grown Diamond was created by High Pressure High Temperature (HPHT) growth process. Indications of post-growth treatment.

ADDITIONAL GRADING INFORMATION

Polish **EXCELLENT**
Symmetry **EXCELLENT**
Fluorescence **NONE**
Inscription(s) **IGI LG799631526**

Comments: This Laboratory Grown Diamond was created by High Pressure High Temperature (HPHT) growth process. Indications of post-growth treatment.



June 23, 2026
IGI Report No **LG799631526**
CUSHION MODIFIED BRILLIANT
6.06 X 5.49 X 3.69 MM
Carat Weight **1.02 CARAT**
Color Grade **FANCY VIVID BLUE**
Clarity Grade **VS 2**
Depth **67.2%**
Table **63%**
Girdle **Medium To Thick (Faceted)**
Culet **Pointed**
Polish **EXCELLENT**
Symmetry **EXCELLENT**
Fluorescence **NONE**
Inscription(s) **IGI LG799631526**

Comments: This Laboratory Grown Diamond was created by High Pressure High Temperature (HPHT) growth process. Indications of post-growth treatment.