



ELECTRONIC COPY

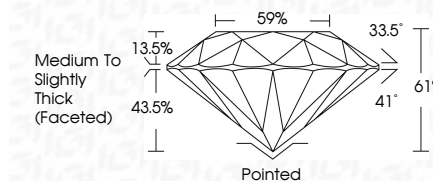
LG799631434 Report verification at igi.org



June 19, 2026 IGI Report Number LG799631434 Description LABORATORY GROWN DIAMOND Shape and Cutting Style ROUND BRILLIANT Measurements 8.13 - 8.19 X 4.98 MM

GRADING RESULTS

Carat Weight 2.03 CARATS Color Grade D Clarity Grade FLAWLESS Cut Grade IDEAL



ADDITIONAL GRADING INFORMATION

Polish EXCELLENT Symmetry EXCELLENT Fluorescence NONE Inscription(s) LG799631434 Comments: As Grown - No indication of post-growth treatment. This Laboratory Grown Diamond was created by High Pressure High Temperature (HPHT) growth process. Type II



June 19, 2026 IGI Report No LG799631434 ROUND BRILLIANT 8.13 - 8.19 X 4.98 MM 2.03 CARATS D FLAWLESS IDEAL 61% 59% Medium To Slightly Thick (Faceted) Pointed EXCELLENT EXCELLENT NONE LG799631434

June 19, 2026 IGI Report Number LG799631434 Description LABORATORY GROWN DIAMOND Shape and Cutting Style ROUND BRILLIANT Measurements 8.13 - 8.19 X 4.98 MM

GRADING RESULTS

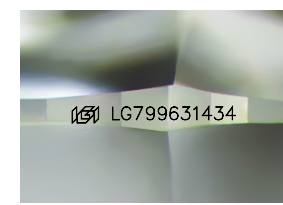
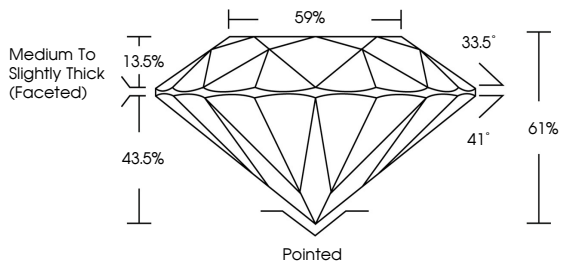
Carat Weight 2.03 CARATS Color Grade D Clarity Grade FLAWLESS Cut Grade IDEAL

ADDITIONAL GRADING INFORMATION

Polish EXCELLENT Symmetry EXCELLENT Fluorescence NONE Inscription(s) LG799631434

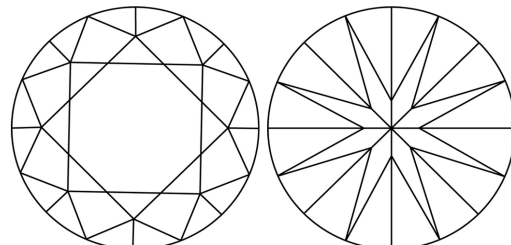
Comments: As Grown - No indication of post-growth treatment. This Laboratory Grown Diamond was created by High Pressure High Temperature (HPHT) growth process. Type II

PROPORTIONS



Sample Image Used

CLARITY CHARACTERISTICS



KEY TO SYMBOLS

Red symbols indicate internal characteristics. Green symbols indicate external characteristics.

COLOR

D E F G H I J Faint Very Light Light

CLARITY

FL IF VS 1-2 VS 1-2 SI 1-2 I 1-3 Flawless Internally Flawless Very Very Slightly Included Very Slightly Included Slightly Included Included

