



ELECTRONIC COPY

LG799631325
Report verification at igi.org



June 16, 2026
IGI Report Number LG799631325
Description LABORATORY GROWN DIAMOND
Shape and Cutting Style CUT CORNERED RECTANGULAR MODIFIED BRILLIANT
Measurements 7.03 X 5.07 X 3.28 MM
GRADING RESULTS
Carat Weight 1.05 CARAT
Color Grade FANCY VIVID GREEN
Clarity Grade VVS 1

LABORATORY GROWN DIAMOND REPORT

June 16, 2026
IGI Report Number LG799631325
Description LABORATORY GROWN DIAMOND
Shape and Cutting Style CUT CORNERED RECTANGULAR MODIFIED BRILLIANT
Measurements 7.03 X 5.07 X 3.28 MM

GRADING RESULTS

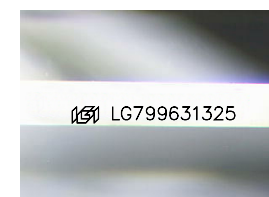
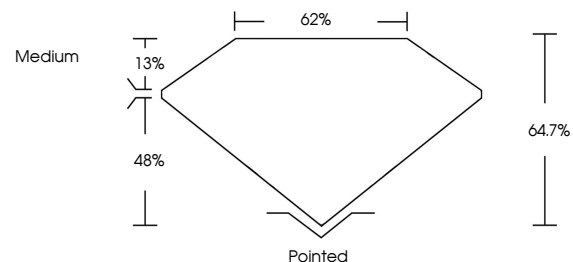
Carat Weight 1.05 CARAT
Color Grade FANCY VIVID GREEN
Clarity Grade VVS 1

ADDITIONAL GRADING INFORMATION

Polish VERY GOOD
Symmetry EXCELLENT
Fluorescence NONE
Inscription(s) LG799631325

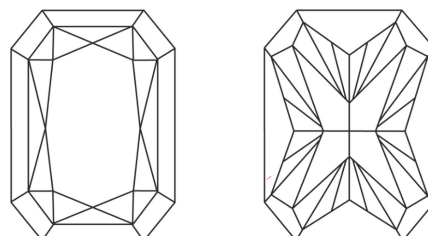
Comments: This Laboratory Grown Diamond was created by High Pressure High Temperature (HPHT) growth process.
Indications of post-growth treatment.

PROPORTIONS



Sample Image Used

CLARITY CHARACTERISTICS



KEY TO SYMBOLS

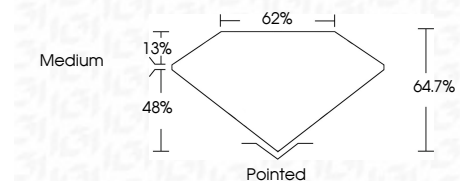
Red symbols indicate internal characteristics.
Green symbols indicate external characteristics.

COLOR

D E F G H I J Faint Very Light Light

CLARITY

FL IF VVS 1-2 VS 1-2 SI 1-2 I 1-3
Flawless Internally Flawless Very Very Slightly Included Very Slightly Included Slightly Included Included



ADDITIONAL GRADING INFORMATION

Polish VERY GOOD
Symmetry EXCELLENT
Fluorescence NONE
Inscription(s) LG799631325
Comments: This Laboratory Grown Diamond was created by High Pressure High Temperature (HPHT) growth process.
Indications of post-growth treatment.



June 16, 2026
IGI Report No LG799631325
CUT CORNERED RECT. MODIFIED BRILLIANT
7.03 X 5.07 X 3.28 MM
1.05 CARAT
FANCY VIVID GREEN
VVS 1
64.7%
62%
Medium
Polished
VERY GOOD
EXCELLENT
NONE
Inscription(s) LG799631325
Comments: This Laboratory Grown Diamond was created by High Pressure High Temperature (HPHT) growth process.
Indications of post-growth treatment.