



**ELECTRONIC COPY**

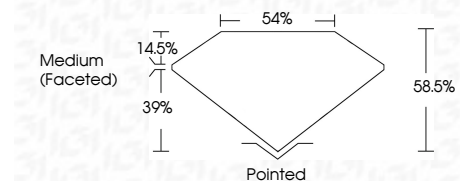
LG799631033  
Report verification at igi.org



June 8, 2026  
IGI Report Number **LG799631033**  
Description **LABORATORY GROWN DIAMOND**  
Shape and Cutting Style **MARQUISE BRILLIANT**  
Measurements **14.50 X 7.20 X 4.21 MM**

**GRADING RESULTS**

Carat Weight **2.49 CARATS**  
Color Grade **E**  
Clarity Grade **VVS 2**



**ADDITIONAL GRADING INFORMATION**

Polish **EXCELLENT**  
Symmetry **EXCELLENT**  
Fluorescence **NONE**  
Inscription(s) **IGI LG799631033**  
Comments: This Laboratory Grown Diamond was created by Chemical Vapor Deposition (CVD) growth process. Type IIa



June 8, 2026  
IGI Report No LG799631033  
**MARQUISE BRILLIANT**  
14.50 X 7.20 X 4.21 MM  
2.49 CARATS  
E  
VVS 2  
58.5%  
54%  
39%  
14.5%  
Medium (Faceted)  
Pointed  
EXCELLENT  
EXCELLENT  
NONE  
IGI LG799631033  
Comments: This Laboratory Grown Diamond was created by Chemical Vapor Deposition (CVD) growth process. Type IIa

**LABORATORY GROWN DIAMOND REPORT**

June 8, 2026  
IGI Report Number **LG799631033**  
Description **LABORATORY GROWN DIAMOND**  
Shape and Cutting Style **MARQUISE BRILLIANT**  
Measurements **14.50 X 7.20 X 4.21 MM**

**GRADING RESULTS**

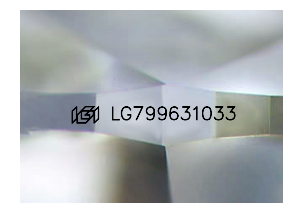
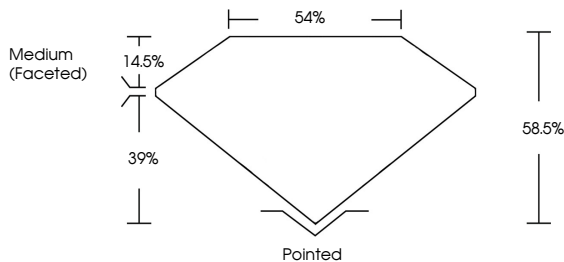
Carat Weight **2.49 CARATS**  
Color Grade **E**  
Clarity Grade **VVS 2**

**ADDITIONAL GRADING INFORMATION**

Polish **EXCELLENT**  
Symmetry **EXCELLENT**  
Fluorescence **NONE**  
Inscription(s) **IGI LG799631033**

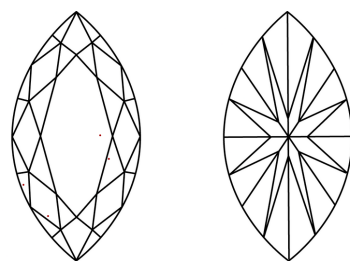
Comments: This Laboratory Grown Diamond was created by Chemical Vapor Deposition (CVD) growth process. Type IIa

**PROPORTIONS**



Sample Image Used

**CLARITY CHARACTERISTICS**



**KEY TO SYMBOLS**

Red symbols indicate internal characteristics.  
Green symbols indicate external characteristics.

**COLOR**

D	E	F	G	H	I	J	Faint	Very Light	Light
---	---	---	---	---	---	---	-------	------------	-------

**CLARITY**

FL	IF	VVS <sup>1-2</sup>	VS <sup>1-2</sup>	SI <sup>1-2</sup>	I <sup>1-3</sup>
Flawless	Internally Flawless	Very Very Slightly Included	Very Slightly Included	Slightly Included	Included

