



ELECTRONIC COPY

LG799630911
Report verification at igi.org



June 11, 2026

IGI Report Number **LG799630911**

Description **LABORATORY GROWN DIAMOND**

Shape and Cutting Style **PEAR STEP CUT**

Measurements **12.17 X 6.90 X 4.13 MM**

GRADING RESULTS

Carat Weight **2.56 CARATS**

Color Grade **VERY LIGHT BROWN**

Clarity Grade **VVS 2**

June 11, 2026
IGI Report Number **LG799630911**
Description **LABORATORY GROWN DIAMOND**
Shape and Cutting Style **PEAR STEP CUT**
Measurements **12.17 X 6.90 X 4.13 MM**

GRADING RESULTS

Carat Weight **2.56 CARATS**

Color Grade **VERY LIGHT BROWN**

Clarity Grade **VVS 2**

ADDITIONAL GRADING INFORMATION

Polish **EXCELLENT**

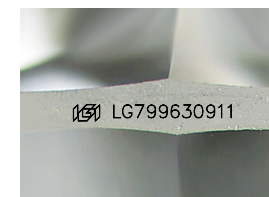
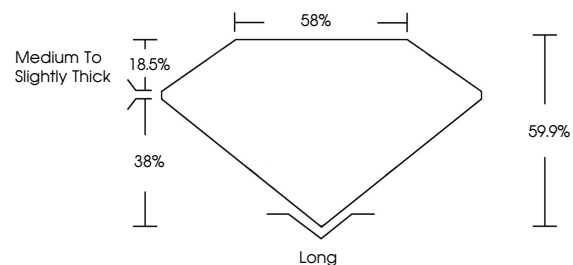
Symmetry **EXCELLENT**

Fluorescence **NONE**

Inscription(s) **IGI LG799630911**

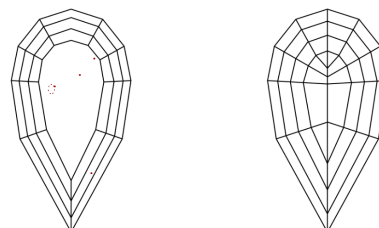
Comments: This Laboratory Grown Diamond was created by Chemical Vapor Deposition (CVD) growth process.
Type IIa

PROPORTIONS



Sample Image Used

CLARITY CHARACTERISTICS



KEY TO SYMBOLS

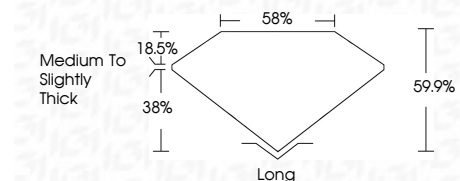
Red symbols indicate internal characteristics.
Green symbols indicate external characteristics.

COLOR

D E F G H I J Faint Very Light Light

CLARITY

FL	IF	VVS ¹⁻²	VS ¹⁻²	SI ¹⁻²	I ¹⁻³
Flawless	Internally Flawless	Very Very Slightly Included	Very Slightly Included	Slightly Included	Included



ADDITIONAL GRADING INFORMATION

Polish **EXCELLENT**

Symmetry **EXCELLENT**

Fluorescence **NONE**

Inscription(s) **IGI LG799630911**

Comments: This Laboratory Grown Diamond was created by Chemical Vapor Deposition (CVD) growth process.
Type IIa



IGI



June 11, 2026
IGI Report No. **LG799630911**
PEAR STEP CUT

2.56 CARATS
Carat Weight
VERY LIGHT BROWN
Color Grade

VVS 2
Clarity Grade
59.9%
Depth
38%
Table
Medium to Slightly Thick
Girdle

Long
Culet
EXCELLENT
Polish
EXCELLENT
Symmetry
NONE
Fluorescence
IGI LG799630911
Inscription(s)

Comments: This Laboratory Grown Diamond was created by Chemical Vapor Deposition (CVD) growth process.
Type IIa