



ELECTRONIC COPY

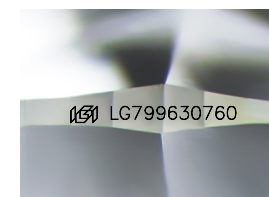
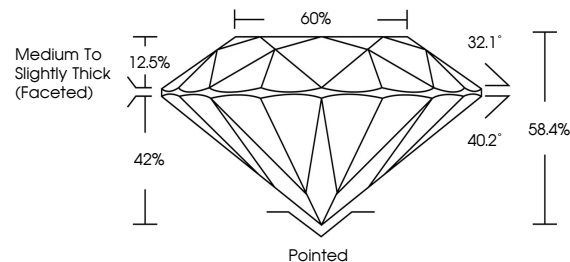
LG799630760
Report verification at igi.org



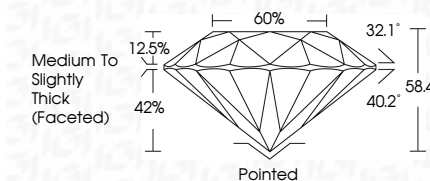
June 10, 2026
IGI Report Number **LG799630760**
Description **LABORATORY GROWN DIAMOND**
Shape and Cutting Style **ROUND BRILLIANT**
Measurements **8.22 - 8.25 X 4.81 MM**
GRADING RESULTS
Carat Weight **2.00 CARATS**
Color Grade **F**
Clarity Grade **VVS 2**
Cut Grade **EXCELLENT**

June 10, 2026
IGI Report Number **LG799630760**
Description **LABORATORY GROWN DIAMOND**
Shape and Cutting Style **ROUND BRILLIANT**
Measurements **8.22 - 8.25 X 4.81 MM**
GRADING RESULTS
Carat Weight **2.00 CARATS**
Color Grade **F**
Clarity Grade **VVS 2**
Cut Grade **EXCELLENT**

PROPORTIONS



Sample Image Used



ADDITIONAL GRADING INFORMATION
Polish **EXCELLENT**
Symmetry **EXCELLENT**
Fluorescence **NONE**
Inscription(s) **IGI LG799630760**

Comments: This Laboratory Grown Diamond was created by Chemical Vapor Deposition (CVD) growth process. Type IIa

COLOR

D E F G H I J Faint Very Light Light

CLARITY

FL	IF	VS ¹⁻²	VS ¹⁻²	SI ¹⁻²	I ¹⁻³
Flawless	Internally Flawless	Very Very Slightly Included	Very Slightly Included	Slightly Included	Included

ADDITIONAL GRADING INFORMATION

Polish **EXCELLENT**
Symmetry **EXCELLENT**
Fluorescence **NONE**
Inscription(s) **IGI LG799630760**
Comments: This Laboratory Grown Diamond was created by Chemical Vapor Deposition (CVD) growth process. Type IIa



IGI



June 10, 2026
IGI Report No LG799630760
ROUND BRILLIANT
8.22 - 8.25 X 4.81 MM
2.00 CARATS
Color Grade **F**
Clarity Grade **VVS 2**
Depth **58.4%**
Table **60%**
Girdle **Medium To Slightly Thick (Faceted)**
Culet **Pointed**
Polish **EXCELLENT**
Symmetry **EXCELLENT**
Fluorescence **NONE**
Inscriptions(s) **IGI LG799630760**
Comments: This Laboratory Grown Diamond was created by Chemical Vapor Deposition (CVD) growth process. Type IIa