



ELECTRONIC COPY

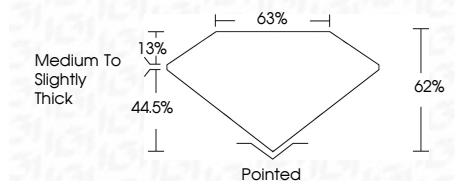
LG799630675
Report verification at igi.org



June 10, 2026
IGI Report Number **LG799630675**
Description **LABORATORY GROWN DIAMOND**
Shape and Cutting Style **OVAL POLYGON STEP CUT**
Measurements **9.46 X 6.82 X 4.23 MM**

GRADING RESULTS

Carat Weight **2.00 CARATS**
Color Grade **E**
Clarity Grade **VVS 2**



ADDITIONAL GRADING INFORMATION

Polish **EXCELLENT**
Symmetry **EXCELLENT**
Fluorescence **NONE**
Inscription(s) **IGI LG799630675**
Comments: This Laboratory Grown Diamond was created by Chemical Vapor Deposition (CVD) growth process. Type IIa



June 10, 2026
IGI Report No LG799630675
OVAL POLYGON STEP CUT
9.46 X 6.82 X 4.23 MM
2.00 CARATS
E
VVS 2
62%
63%
Medium to Slightly Thick
Pointed
EXCELLENT
EXCELLENT
NONE
IGI LG799630675
Comments: This Laboratory Grown Diamond was created by Chemical Vapor Deposition (CVD) growth process. Type IIa

LABORATORY GROWN DIAMOND REPORT

June 10, 2026
IGI Report Number **LG799630675**
Description **LABORATORY GROWN DIAMOND**
Shape and Cutting Style **OVAL POLYGON STEP CUT**
Measurements **9.46 X 6.82 X 4.23 MM**

GRADING RESULTS

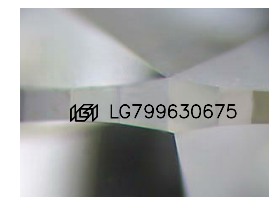
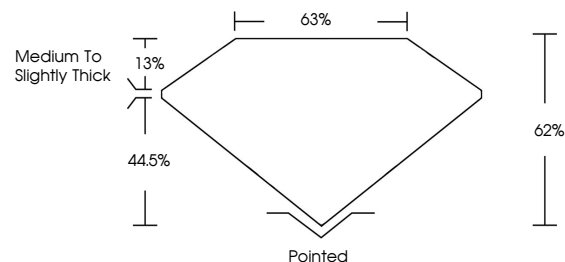
Carat Weight **2.00 CARATS**
Color Grade **E**
Clarity Grade **VVS 2**

ADDITIONAL GRADING INFORMATION

Polish **EXCELLENT**
Symmetry **EXCELLENT**
Fluorescence **NONE**
Inscription(s) **IGI LG799630675**

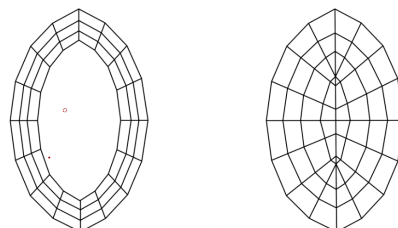
Comments: This Laboratory Grown Diamond was created by Chemical Vapor Deposition (CVD) growth process. Type IIa

PROPORTIONS



Sample Image Used

CLARITY CHARACTERISTICS



KEY TO SYMBOLS

Red symbols indicate internal characteristics.
Green symbols indicate external characteristics.

COLOR

D E F G H I J Faint Very Light Light

CLARITY

FL	IF	VVS ¹⁻²	VS ¹⁻²	SI ¹⁻²	I ¹⁻³
Flawless	Internally Flawless	Very Very Slightly Included	Very Slightly Included	Slightly Included	Included

