



ELECTRONIC COPY

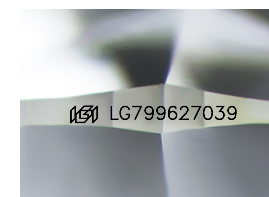
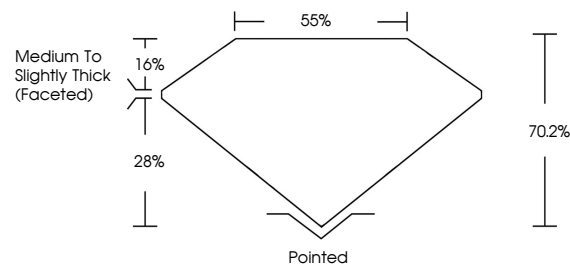
LG799627039
Report verification at igi.org



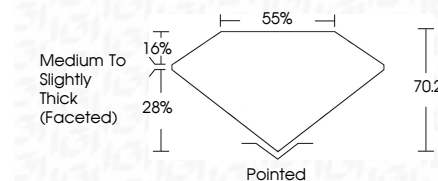
May 23, 2026
IGI Report Number **LG799627039**
Description **LABORATORY GROWN DIAMOND**
Shape and Cutting Style **CUSHION MODIFIED BRILLIANT**
Measurements **8.62 X 6.62 X 4.65 MM**
GRADING RESULTS
Carat Weight **2.51 CARATS**
Color Grade **FANCY INTENSE BROWN PINK**
Clarity Grade **VS 2**

May 23, 2026
IGI Report Number **LG799627039**
Description **LABORATORY GROWN DIAMOND**
Shape and Cutting Style **CUSHION MODIFIED BRILLIANT**
Measurements **8.62 X 6.62 X 4.65 MM**
GRADING RESULTS
Carat Weight **2.51 CARATS**
Color Grade **FANCY INTENSE BROWN PINK**
Clarity Grade **VS 2**

PROPORTIONS



Sample Image Used



ADDITIONAL GRADING INFORMATION

Polish **EXCELLENT**
Symmetry **EXCELLENT**
Fluorescence **SLIGHT**
Inscription(s) **IGI LG799627039**

Comments: This Laboratory Grown Diamond was created by Chemical Vapor Deposition (CVD) growth process. Indications of post-growth treatment.

ADDITIONAL GRADING INFORMATION

Polish **EXCELLENT**
Symmetry **EXCELLENT**
Fluorescence **SLIGHT**
Inscription(s) **IGI LG799627039**

Comments: This Laboratory Grown Diamond was created by Chemical Vapor Deposition (CVD) growth process. Indications of post-growth treatment.

COLOR

D E F G H I J Faint Very Light Light

CLARITY

FL	IF	VS ¹⁻²	VS ¹⁻²	SI ¹⁻²	I ¹⁻³
Flawless	Internally Flawless	Very Very Slightly Included	Very Slightly Included	Slightly Included	Included



IGI



May 23, 2026
IGI Report No LG799627039
CUSHION MODIFIED BRILLIANT

8.62 X 6.62 X 4.65 MM
2.51 CARATS
FANCY INTENSE BROWN PINK
VS 2
70.2%
85%
Medium to Slightly Thick (Faceted)
Pointed
EXCELLENT
EXCELLENT
SLIGHT
IGI LG799627039

Comments: This Laboratory Grown Diamond was created by Chemical Vapor Deposition (CVD) growth process. Indications of post-growth treatment.