



LABORATORY GROWN DIAMOND REPORT

May 12, 2026
 IGI Report Number **LG799626750**
 Description **LABORATORY GROWN DIAMOND**
 Shape and Cutting Style **OVAL BRILLIANT**
 Measurements **7.46 X 5.17 X 3.10 MM**

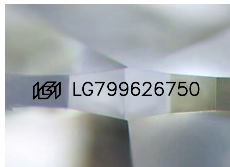
GRADING RESULTS

Carat Weight **0.77 CARAT**
 Color Grade **E**
 Clarity Grade **VS 1**

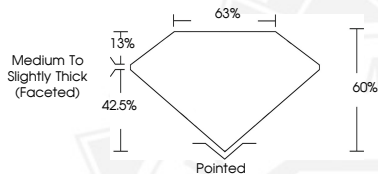
ADDITIONAL GRADING INFORMATION

Polish **VERY GOOD**
 Symmetry **VERY GOOD**
 Fluorescence **NONE**
 Inscription(s) **IGI LG799626750**

Comments: This Laboratory Grown Diamond was created by Chemical Vapor Deposition (CVD) growth process. Type IIa



Sample Image Used



May 12, 2026
 IGI Report Number **LG799626750**
OVAL BRILLIANT
LABORATORY GROWN DIAMOND
7.46 X 5.17 X 3.10 MM
 Carat Weight **0.77 CARAT**
 Color Grade **E**
 Clarity Grade **VS 1**
 Polish **VERY GOOD**
 Symmetry **VERY GOOD**
 Fluorescence **NONE**
 Inscription(s) **IGI LG799626750**

Comments: This Laboratory Grown Diamond was created by Chemical Vapor Deposition (CVD) growth process. Type IIa



May 12, 2026
 IGI Report Number **LG799626750**
OVAL BRILLIANT
LABORATORY GROWN DIAMOND
7.46 X 5.17 X 3.10 MM
 Carat Weight **0.77 CARAT**
 Color Grade **E**
 Clarity Grade **VS 1**
 Polish **VERY GOOD**
 Symmetry **VERY GOOD**
 Fluorescence **NONE**
 Inscription(s) **IGI LG799626750**

Comments: This Laboratory Grown Diamond was created by Chemical Vapor Deposition (CVD) growth process. Type IIa

THIS DOCUMENT WAS PRODUCED WITH THE FOLLOWING SECURITY MEASURES: SPECIAL DOCUMENT PAPER, INK SCREENS, WATERMARK, BACKGROUND DESIGNS, HOLOGRAM AND OTHER SECURITY FEATURES NOT LISTED AND DO EXCEED DOCUMENT SECURITY INDUSTRY GUIDELINES.