



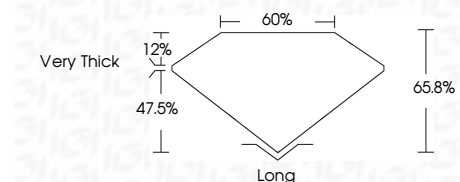
**ELECTRONIC COPY**

LG799626474  
Report verification at igi.org



May 13, 2026  
IGI Report Number **LG799626474**  
Description **LABORATORY GROWN DIAMOND**  
Shape and Cutting Style **MODIFIED LEAF STEP CUT**  
Measurements **14.07 X 7.74 X 5.09 MM**

**GRADING RESULTS**  
Carat Weight **4.52 CARATS**  
Color Grade **E**  
Clarity Grade **VVS 2**



**ADDITIONAL GRADING INFORMATION**  
Polish **EXCELLENT**  
Symmetry **EXCELLENT**  
Fluorescence **NONE**  
Inscription(s) **IGI LG799626474**  
Comments: This Laboratory Grown Diamond was created by Chemical Vapor Deposition (CVD) growth process. Type IIa



May 13, 2026  
IGI Report No **LG799626474**  
**MODIFIED LEAF STEP CUT**  
14.07 X 7.74 X 5.09 MM  
4.52 CARATS  
E  
VVS 2  
65.8%  
12%  
05%  
Very Thick  
Long  
EXCELLENT  
EXCELLENT  
NONE  
IGI LG799626474  
Comments: This Laboratory Grown Diamond was created by Chemical Vapor Deposition (CVD) growth process. Type IIa

**LABORATORY GROWN DIAMOND REPORT**

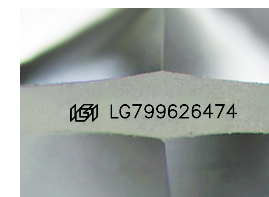
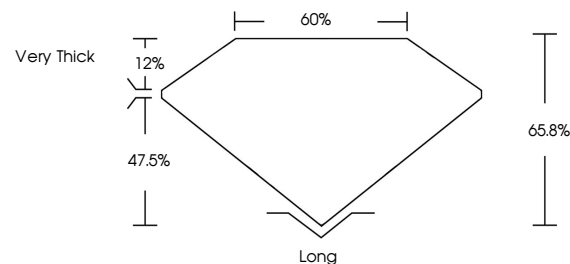
May 13, 2026  
IGI Report Number **LG799626474**  
Description **LABORATORY GROWN DIAMOND**  
Shape and Cutting Style **MODIFIED LEAF STEP CUT**  
Measurements **14.07 X 7.74 X 5.09 MM**

**GRADING RESULTS**  
Carat Weight **4.52 CARATS**  
Color Grade **E**  
Clarity Grade **VVS 2**

**ADDITIONAL GRADING INFORMATION**  
Polish **EXCELLENT**  
Symmetry **EXCELLENT**  
Fluorescence **NONE**  
Inscription(s) **IGI LG799626474**

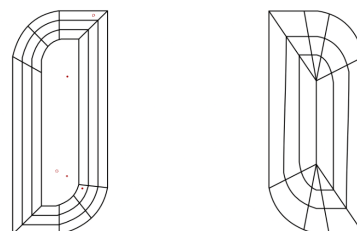
Comments: This Laboratory Grown Diamond was created by Chemical Vapor Deposition (CVD) growth process. Type IIa

**PROPORTIONS**



Sample Image Used

**CLARITY CHARACTERISTICS**



**KEY TO SYMBOLS**

Red symbols indicate internal characteristics.  
Green symbols indicate external characteristics.

**COLOR**

D E F G H I J Faint Very Light Light

**CLARITY**

FL	IF	VVS <sup>1-2</sup>	VS <sup>1-2</sup>	SI <sup>1-2</sup>	I <sup>1-3</sup>
Flawless	Internally Flawless	Very Very Slightly Included	Very Slightly Included	Slightly Included	Included

