



ELECTRONIC COPY

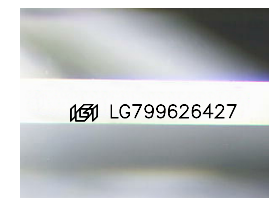
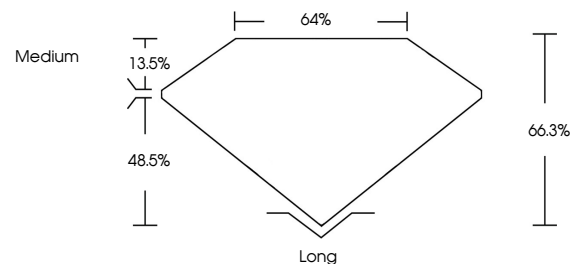
LG799626427
Report verification at igi.org



May 29, 2026
IGI Report Number **LG799626427**
Description **LABORATORY GROWN DIAMOND**
Shape and Cutting Style **EMERALD CUT**
Measurements **8.80 X 5.55 X 3.68 MM**
GRADING RESULTS
Carat Weight **1.82 CARAT**
Color Grade **FANCY INTENSE BLUISH GREEN**
Clarity Grade **VVS 2**

May 29, 2026
IGI Report Number **LG799626427**
Description **LABORATORY GROWN DIAMOND**
Shape and Cutting Style **EMERALD CUT**
Measurements **8.80 X 5.55 X 3.68 MM**

PROPORTIONS

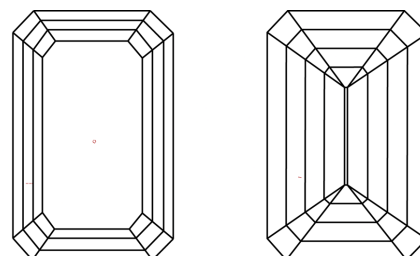


Sample Image Used

GRADING RESULTS

Carat Weight **1.82 CARAT**
Color Grade **FANCY INTENSE BLUISH GREEN**
Clarity Grade **VVS 2**

CLARITY CHARACTERISTICS



KEY TO SYMBOLS

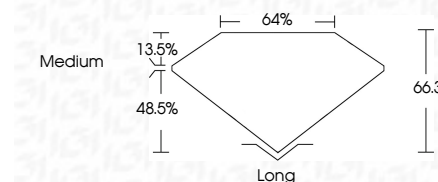
Red symbols indicate internal characteristics.
Green symbols indicate external characteristics.

COLOR

D E F G H I J Faint Very Light Light

CLARITY

FL	IF	VVS ¹⁻²	VS ¹⁻²	SI ¹⁻²	I ¹⁻³
Flawless	Internally Flawless	Very Very Slightly Included	Very Slightly Included	Slightly Included	Included



ADDITIONAL GRADING INFORMATION

Polish **EXCELLENT**
Symmetry **EXCELLENT**
Fluorescence **NONE**
Inscription(s) **(IGI) LG799626427**
Comments: This Laboratory Grown Diamond was created by Chemical Vapor Deposition (CVD) growth process. Indications of post-growth treatment.

ADDITIONAL GRADING INFORMATION

Polish **EXCELLENT**
Symmetry **EXCELLENT**
Fluorescence **NONE**
Inscription(s) **(IGI) LG799626427**

Comments: This Laboratory Grown Diamond was created by Chemical Vapor Deposition (CVD) growth process. Indications of post-growth treatment.



May 29, 2026
IGI Report No **LG799626427**
EMERALD CUT
Carat Weight **1.82 CARAT**
Color Grade **FANCY INTENSE BLUISH GREEN**
Clarity Grade **VVS 2**
Depth **48.5%**
Table **13.5%**
Girdle **Medium**
Culet **Long**
Polish **EXCELLENT**
Symmetry **EXCELLENT**
Fluorescence **NONE**
Inscription(s) **(IGI) LG799626427**
Comments: This Laboratory Grown Diamond was created by Chemical Vapor Deposition (CVD) growth process. Indications of post-growth treatment.