



**ELECTRONIC COPY**

LG799626224  
Report verification at igi.org



May 26, 2026  
IGI Report Number **LG799626224**  
Description **LABORATORY GROWN DIAMOND**  
Shape and Cutting Style **TRIANGULAR MODIFIED BRILLIANT**  
Measurements **7.56 X 7.23 X 3.62 MM**  
**GRADING RESULTS**  
Carat Weight **1.11 CARAT**  
Color Grade **D**  
Clarity Grade **VS 1**

May 26, 2026  
IGI Report Number **LG799626224**  
Description **LABORATORY GROWN DIAMOND**  
Shape and Cutting Style **TRIANGULAR MODIFIED BRILLIANT**  
Measurements **7.56 X 7.23 X 3.62 MM**

**GRADING RESULTS**

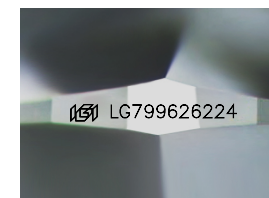
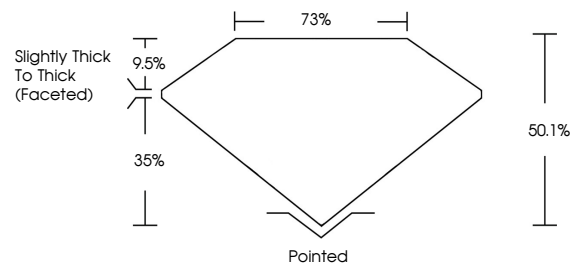
Carat Weight **1.11 CARAT**  
Color Grade **D**  
Clarity Grade **VS 1**

**ADDITIONAL GRADING INFORMATION**

Polish **EXCELLENT**  
Symmetry **EXCELLENT**  
Fluorescence **NONE**  
Inscription(s) **IGI LG799626224**

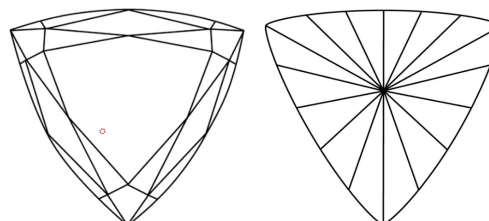
Comments: This Laboratory Grown Diamond was created by Chemical Vapor Deposition (CVD) growth process.  
Type IIa

**PROPORTIONS**



Sample Image Used

**CLARITY CHARACTERISTICS**



**KEY TO SYMBOLS**

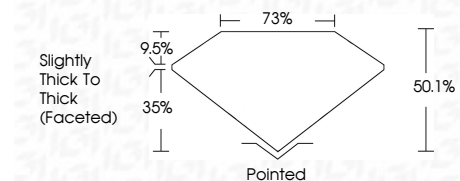
Red symbols indicate internal characteristics.  
Green symbols indicate external characteristics.

**COLOR**

D E F G H I J Faint Very Light Light

**CLARITY**

FL	IF	VS <sup>1-2</sup>	VS <sup>1-2</sup>	SI <sup>1-2</sup>	I <sup>1-3</sup>
Flawless	Internally Flawless	Very Very Slightly Included	Very Slightly Included	Slightly Included	Included



**ADDITIONAL GRADING INFORMATION**

Polish **EXCELLENT**  
Symmetry **EXCELLENT**  
Fluorescence **NONE**  
Inscription(s) **IGI LG799626224**  
Comments: This Laboratory Grown Diamond was created by Chemical Vapor Deposition (CVD) growth process.  
Type IIa



**IGI**



May 26, 2026  
IGI Report No LG799626224  
**TRIANGULAR MODIFIED BRILLIANT**  
7.56 X 7.23 X 3.62 MM  
Carat Weight **1.11 CARAT**  
Color Grade **D**  
Clarity Grade **VS 1**  
Depth **60.1%**  
Table **73%**  
Girdle **Slightly Thick To Thick (Faceted)**  
Culet **Pointed**  
Polish **EXCELLENT**  
Symmetry **EXCELLENT**  
Fluorescence **NONE**  
Inscription(s) **IGI LG799626224**

Comments: This Laboratory Grown Diamond was created by Chemical Vapor Deposition (CVD) growth process.  
Type IIa