



ELECTRONIC COPY

LG799626133
Report verification at igi.org



May 23, 2026

IGI Report Number **LG799626133**

Description **LABORATORY GROWN DIAMOND**

Shape and Cutting Style **EMERALD CUT**

Measurements **7.13 X 5.14 X 3.53 MM**

GRADING RESULTS

Carat Weight **1.32 CARAT**

Color Grade **FANCY VIVID BLUE**

Clarity Grade **VS 1**

LABORATORY GROWN DIAMOND REPORT

May 23, 2026

IGI Report Number **LG799626133**

Description **LABORATORY GROWN DIAMOND**

Shape and Cutting Style **EMERALD CUT**

Measurements **7.13 X 5.14 X 3.53 MM**

GRADING RESULTS

Carat Weight **1.32 CARAT**

Color Grade **FANCY VIVID BLUE**

Clarity Grade **VS 1**

ADDITIONAL GRADING INFORMATION

Polish **EXCELLENT**

Symmetry **EXCELLENT**

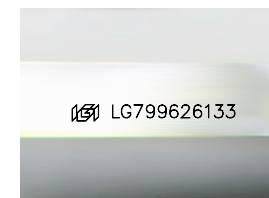
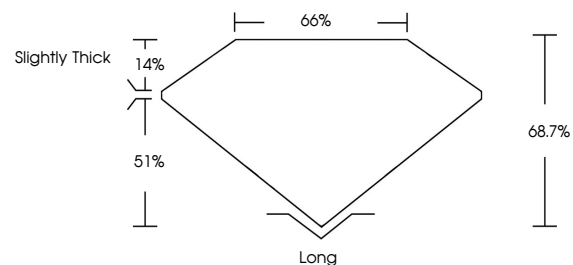
Fluorescence **NONE**

Inscription(s) **IGI LG799626133**

Comments: This Laboratory Grown Diamond was created by Chemical Vapor Deposition (CVD) growth process.

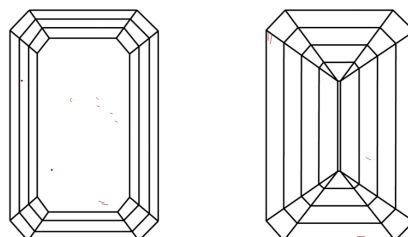
Indications of post-growth treatment.

PROPORTIONS



Sample Image Used

CLARITY CHARACTERISTICS



KEY TO SYMBOLS

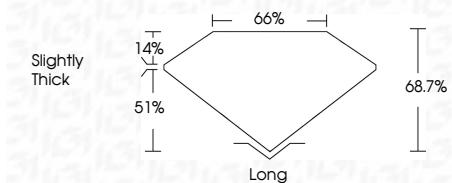
Red symbols indicate internal characteristics.
Green symbols indicate external characteristics.

COLOR

D E F G H I J Faint Very Light Light

CLARITY

FL	IF	VS ¹⁻²	VS ¹⁻²	SI ¹⁻²	I ¹⁻³
Flawless	Internally Flawless	Very Very Slightly Included	Very Slightly Included	Slightly Included	Included



ADDITIONAL GRADING INFORMATION

Polish **EXCELLENT**

Symmetry **EXCELLENT**

Fluorescence **NONE**

Inscription(s) **IGI LG799626133**

Comments: This Laboratory Grown Diamond was created by Chemical Vapor Deposition (CVD) growth process. Indications of post-growth treatment.



IGI



May 23, 2026
IGI Report No LG799626133
EMERALD CUT

1.32 CARAT
7.13 X 5.14 X 3.53 MM

FANCY VIVID BLUE
Color Grade

VS 1
Clarity Grade

68.7%
Depth

66%
Length

Slightly Thick
Girdle

Long
Culet

EXCELLENT
Polish

EXCELLENT
Symmetry

NONE
Fluorescence

IGI LG799626133
Inscription(s)

Comments: This Laboratory Grown Diamond was created by Chemical Vapor Deposition (CVD) growth process. Indications of post-growth treatment.