



LABORATORY GROWN DIAMOND REPORT

May 14, 2026
 IGI Report Number **LG799625592**
 Description **LABORATORY GROWN DIAMOND**
 Shape and Cutting Style **HEART MODIFIED BRILLIANT**
 Measurements **4.38 X 5.08 X 2.90 MM**

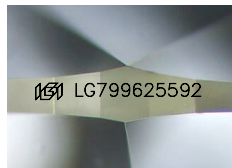
GRADING RESULTS

Carat Weight **0.53 CARAT**
 Color Grade **FANCY PINK**
 Clarity Grade **VS 1**

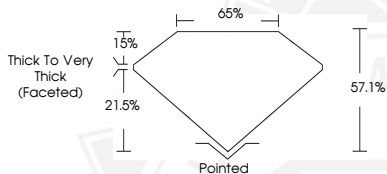
ADDITIONAL GRADING INFORMATION

Polish **GOOD**
 Symmetry **VERY GOOD**
 Fluorescence **SLIGHT**
 Inscription(s) **IGI LG799625592**

Comments: This Laboratory Grown Diamond was created by Chemical Vapor Deposition (CVD) growth process. Indications of post-growth treatment.



Sample Image Used



May 14, 2026

IGI Report Number LG799625592
HEART MODIFIED BRILLIANT
LABORATORY GROWN DIAMOND
4.38 X 5.08 X 2.90 MM

Carat Weight **0.53 CARAT**
 Color Grade **FANCY PINK**
 Clarity Grade **VS 1**
 Polish **GOOD**
 Symmetry **VERY GOOD**
 Fluorescence **SLIGHT**
 Inscription(s) **IGI LG799625592**

Comments: This Laboratory Grown Diamond was created by Chemical Vapor Deposition (CVD) growth process. Indications of post-growth treatment.



May 14, 2026

IGI Report Number LG799625592
HEART MODIFIED BRILLIANT
LABORATORY GROWN DIAMOND
4.38 X 5.08 X 2.90 MM

Carat Weight **0.53 CARAT**
 Color Grade **FANCY PINK**
 Clarity Grade **VS 1**
 Polish **GOOD**
 Symmetry **VERY GOOD**
 Fluorescence **SLIGHT**
 Inscription(s) **IGI LG799625592**

Comments: This Laboratory Grown Diamond was created by Chemical Vapor Deposition (CVD) growth process. Indications of post-growth treatment.



THIS DOCUMENT WAS PRODUCED WITH THE FOLLOWING SECURITY MEASURES: SPECIAL DOCUMENT PAPER, INK SCREENS, WATERMARK, BACKGROUND DESIGNS, HOLOGRAM AND OTHER SECURITY FEATURES NOT LISTED AND DO EXCEED DOCUMENT SECURITY INDUSTRY GUIDELINES.