



**INTERNATIONAL
GEMOLOGICAL
INSTITUTE**

ELECTRONIC COPY



May 15, 2026

IGI Report Number LG799625584
HEART MODIFIED BRILLIANT
LABORATORY GROWN DIAMOND
4.52 X 5.30 X 2.86 MM

Carat Weight 0.53 CARAT
Color Grade FANCY VIVID PINK
Clarity Grade VVS 2
Polish VERY GOOD
Symmetry VERY GOOD
Fluorescence SLIGHT
Inscription(s) IGI LG799625584

Comments: This Laboratory Grown Diamond was created by Chemical Vapor Deposition (CVD) growth process. Indications of post-growth treatment.

LABORATORY GROWN DIAMOND REPORT

May 15, 2026
IGI Report Number **LG799625584**
Description **LABORATORY GROWN DIAMOND**
Shape and Cutting Style **HEART MODIFIED BRILLIANT**
Measurements **4.52 X 5.30 X 2.86 MM**

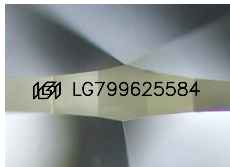
GRADING RESULTS

Carat Weight 0.53 CARAT
Color Grade FANCY VIVID PINK
Clarity Grade VVS 2

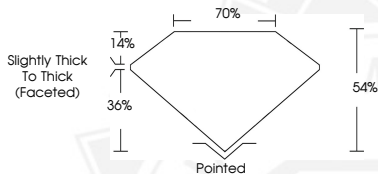
ADDITIONAL GRADING INFORMATION

Polish VERY GOOD
Symmetry VERY GOOD
Fluorescence SLIGHT
Inscription(s) IGI LG799625584

Comments: This Laboratory Grown Diamond was created by Chemical Vapor Deposition (CVD) growth process. Indications of post-growth treatment.



Sample Image Used



May 15, 2026

IGI Report Number LG799625584
HEART MODIFIED BRILLIANT
LABORATORY GROWN DIAMOND
4.52 X 5.30 X 2.86 MM

Carat Weight 0.53 CARAT
Color Grade FANCY VIVID PINK
Clarity Grade VVS 2
Polish VERY GOOD
Symmetry VERY GOOD
Fluorescence SLIGHT
Inscription(s) IGI LG799625584

Comments: This Laboratory Grown Diamond was created by Chemical Vapor Deposition (CVD) growth process. Indications of post-growth treatment.

THIS DOCUMENT WAS PRODUCED WITH THE FOLLOWING SECURITY MEASURES: SPECIAL DOCUMENT PAPER, INK SCREENS, WATERMARK, BACKGROUND DESIGNS, HOLOGRAM AND OTHER SECURITY FEATURES NOT LISTED AND DO EXCEED DOCUMENT SECURITY INDUSTRY GUIDELINES.

For terms & conditions and to verify this report, please visit www.igi.org