



**LABORATORY GROWN DIAMOND REPORT**

May 14, 2026  
 IGI Report Number **LG799625553**  
 Description **LABORATORY GROWN DIAMOND**  
 Shape and Cutting Style **HEART MODIFIED BRILLIANT**  
 Measurements **4.88 X 5.52 X 2.64 MM**

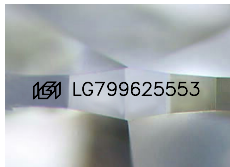
**GRADING RESULTS**

Carat Weight **0.51 CARAT**  
 Color Grade **FANCY PINK**  
 Clarity Grade **VVS 2**

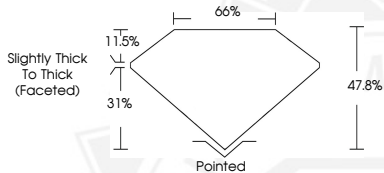
**ADDITIONAL GRADING INFORMATION**

Polish **VERY GOOD**  
 Symmetry **VERY GOOD**  
 Fluorescence **SLIGHT**  
 Inscription(s) **IGI LG799625553**

Comments: This Laboratory Grown Diamond was created by Chemical Vapor Deposition (CVD) growth process. Indications of post-growth treatment.



Sample Image Used



May 14, 2026

**IGI Report Number LG799625553**  
**HEART MODIFIED BRILLIANT**  
**LABORATORY GROWN DIAMOND**  
**4.88 X 5.52 X 2.64 MM**

Carat Weight **0.51 CARAT**  
 Color Grade **FANCY PINK**  
 Clarity Grade **VVS 2**  
 Polish **VERY GOOD**  
 Symmetry **VERY GOOD**  
 Fluorescence **SLIGHT**  
 Inscription(s) **IGI LG799625553**

Comments: This Laboratory Grown Diamond was created by Chemical Vapor Deposition (CVD) growth process. Indications of post-growth treatment.



May 14, 2026

**IGI Report Number LG799625553**  
**HEART MODIFIED BRILLIANT**  
**LABORATORY GROWN DIAMOND**  
**4.88 X 5.52 X 2.64 MM**

Carat Weight **0.51 CARAT**  
 Color Grade **FANCY PINK**  
 Clarity Grade **VVS 2**  
 Polish **VERY GOOD**  
 Symmetry **VERY GOOD**  
 Fluorescence **SLIGHT**  
 Inscription(s) **IGI LG799625553**

Comments: This Laboratory Grown Diamond was created by Chemical Vapor Deposition (CVD) growth process. Indications of post-growth treatment.

THIS DOCUMENT WAS PRODUCED WITH THE FOLLOWING SECURITY MEASURES: SPECIAL DOCUMENT PAPER, INK SCREENS, WATERMARK, BACKGROUND DESIGNS, HOLOGRAM AND OTHER SECURITY FEATURES NOT LISTED AND DO EXCEED DOCUMENT SECURITY INDUSTRY GUIDELINES.