



May 14, 2026

**IGI Report Number** LG799625544  
**HEART MODIFIED BRILLIANT**  
**LABORATORY GROWN DIAMOND**  
**4.61 X 5.61 X 3.43 MM**

**Carat Weight** 0.74 CARAT  
**Color Grade** FANCY PINK  
**Clarity Grade** VS 2  
**Polish** VERY GOOD  
**Symmetry** VERY GOOD  
**Fluorescence** SLIGHT  
**Inscription(s)** IGI LG799625544

Comments: This Laboratory Grown Diamond was created by Chemical Vapor Deposition (CVD) growth process. Indications of post-growth treatment.

**LABORATORY GROWN DIAMOND REPORT**

May 14, 2026

IGI Report Number

LG799625544

Description

LABORATORY GROWN DIAMOND

Shape and Cutting Style

HEART MODIFIED BRILLIANT

Measurements

4.61 X 5.61 X 3.43 MM

**GRADING RESULTS**

Carat Weight

0.74 CARAT

Color Grade

FANCY PINK

Clarity Grade

VS 2

**ADDITIONAL GRADING INFORMATION**

Polish

VERY GOOD

Symmetry

VERY GOOD

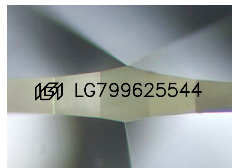
Fluorescence

SLIGHT

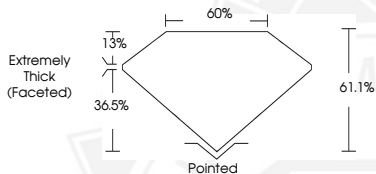
Inscription(s)

IGI LG799625544

Comments: This Laboratory Grown Diamond was created by Chemical Vapor Deposition (CVD) growth process. Indications of post-growth treatment.



Sample Image Used



May 14, 2026

**IGI Report Number** LG799625544  
**HEART MODIFIED BRILLIANT**  
**LABORATORY GROWN DIAMOND**  
**4.61 X 5.61 X 3.43 MM**

**Carat Weight** 0.74 CARAT  
**Color Grade** FANCY PINK  
**Clarity Grade** VS 2  
**Polish** VERY GOOD  
**Symmetry** VERY GOOD  
**Fluorescence** SLIGHT  
**Inscription(s)** IGI LG799625544

Comments: This Laboratory Grown Diamond was created by Chemical Vapor Deposition (CVD) growth process. Indications of post-growth treatment.



THIS DOCUMENT WAS PRODUCED WITH THE FOLLOWING SECURITY MEASURES: SPECIAL DOCUMENT PAPER, INK SCREENS, WATERMARK, BACKGROUND DESIGNS, HOLOGRAM AND OTHER SECURITY FEATURES NOT LISTED AND DO EXCEED DOCUMENT SECURITY INDUSTRY GUIDELINES.