



May 14, 2026

IGI Report Number LG799625540
HEART MODIFIED BRILLIANT
LABORATORY GROWN DIAMOND
4.97 X 5.85 X 3.04 MM

Carat Weight **0.66 CARAT**
Color Grade **FANCY VIVID PINK**
Clarity Grade **VS 1**
Polish **VERY GOOD**
Symmetry **VERY GOOD**
Fluorescence **SLIGHT**
Inscription(s) **IGI LG799625540**

Comments: This Laboratory Grown Diamond was created by Chemical Vapor Deposition (CVD) growth process. Indications of post-growth treatment.
Secondary color: Brown

LABORATORY GROWN DIAMOND REPORT

May 14, 2026
IGI Report Number **LG799625540**
Description **LABORATORY GROWN DIAMOND**
Shape and Cutting Style **HEART MODIFIED BRILLIANT**
Measurements **4.97 X 5.85 X 3.04 MM**

GRADING RESULTS

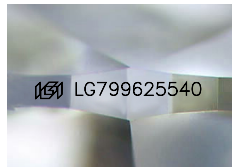
Carat Weight **0.66 CARAT**
Color Grade **FANCY VIVID PINK**
Clarity Grade **VS 1**

ADDITIONAL GRADING INFORMATION

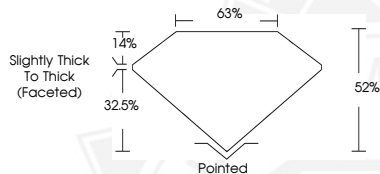
Polish **VERY GOOD**
Symmetry **VERY GOOD**
Fluorescence **SLIGHT**
Inscription(s) **IGI LG799625540**

Comments: This Laboratory Grown Diamond was created by Chemical Vapor Deposition (CVD) growth process.
Indications of post-growth treatment.

Secondary color: Brown



Sample Image Used



May 14, 2026

IGI Report Number LG799625540
HEART MODIFIED BRILLIANT
LABORATORY GROWN DIAMOND
4.97 X 5.85 X 3.04 MM

Carat Weight **0.66 CARAT**
Color Grade **FANCY VIVID PINK**
Clarity Grade **VS 1**
Polish **VERY GOOD**
Symmetry **VERY GOOD**
Fluorescence **SLIGHT**
Inscription(s) **IGI LG799625540**

Comments: This Laboratory Grown Diamond was created by Chemical Vapor Deposition (CVD) growth process. Indications of post-growth treatment.
Secondary color: Brown



THIS DOCUMENT WAS PRODUCED WITH THE FOLLOWING SECURITY MEASURES: SPECIAL DOCUMENT PAPER, INK SCREENS, WATERMARK, BACKGROUND DESIGNS, HOLOGRAM AND OTHER SECURITY FEATURES NOT LISTED AND DO EXCEED DOCUMENT SECURITY INDUSTRY GUIDELINES.