



ELECTRONIC COPY

LG799625382
Report verification at igi.org



May 21, 2026

IGI Report Number **LG799625382**

Description **LABORATORY GROWN DIAMOND**

Shape and Cutting Style **MARQUISE BRILLIANT**

Measurements **11.79 X 6.56 X 3.98 MM**

GRADING RESULTS

Carat Weight **1.74 CARAT**

Color Grade **FANCY VIVID BLUE**

Clarity Grade **VS 2**

May 21, 2026
IGI Report Number **LG799625382**
Description **LABORATORY GROWN DIAMOND**
Shape and Cutting Style **MARQUISE BRILLIANT**
Measurements **11.79 X 6.56 X 3.98 MM**

GRADING RESULTS

Carat Weight **1.74 CARAT**

Color Grade **FANCY VIVID BLUE**

Clarity Grade **VS 2**

ADDITIONAL GRADING INFORMATION

Polish **VERY GOOD**

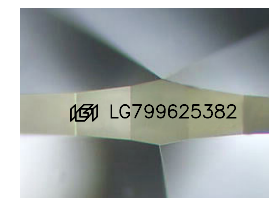
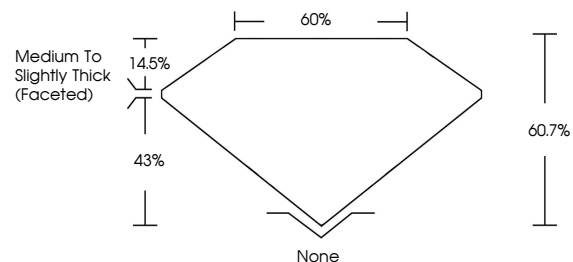
Symmetry **VERY GOOD**

Fluorescence **NONE**

Inscription(s) **IGI LG799625382**

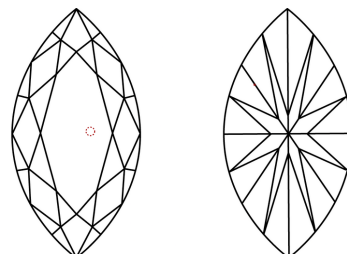
Comments: This Laboratory Grown Diamond was created by Chemical Vapor Deposition (CVD) growth process.
Indications of post-growth treatment.

PROPORTIONS



Sample Image Used

CLARITY CHARACTERISTICS



KEY TO SYMBOLS

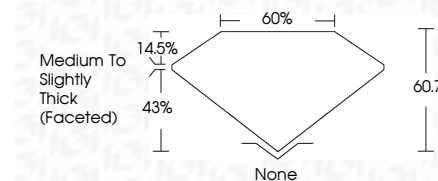
Red symbols indicate internal characteristics.
Green symbols indicate external characteristics.

COLOR

D E F G H I J Faint Very Light Light

CLARITY

FL	IF	VS ¹⁻²	VS ¹⁻²	SI ¹⁻²	I ¹⁻³
Flawless	Internally Flawless	Very Very Slightly Included	Very Slightly Included	Slightly Included	Included



ADDITIONAL GRADING INFORMATION

Polish **VERY GOOD**

Symmetry **VERY GOOD**

Fluorescence **NONE**

Inscription(s) **IGI LG799625382**

Comments: This Laboratory Grown Diamond was created by Chemical Vapor Deposition (CVD) growth process.
Indications of post-growth treatment.



IGI



May 21, 2026
IGI Report No LG799625382
MARQUISE BRILLIANT

11.79 X 6.56 X 3.98 MM
1.74 CARAT
FANCY VIVID BLUE
VS 2
60.7%
60%

Medium to Slightly Thick (Faceted)
None
VERY GOOD
VERY GOOD
NONE
NONE
IGI LG799625382

Comments: This Laboratory Grown Diamond was created by Chemical Vapor Deposition (CVD) growth process.
Indications of post-growth treatment.