



ELECTRONIC COPY

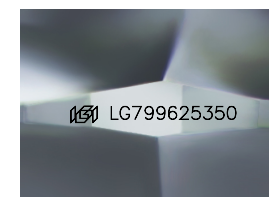
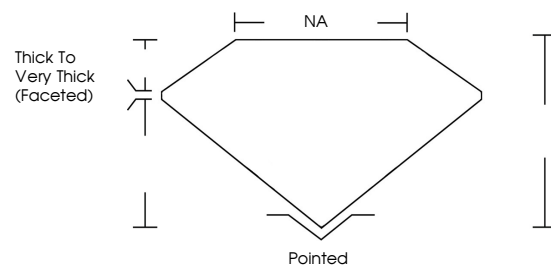
LG799625350
Report verification at igi.org



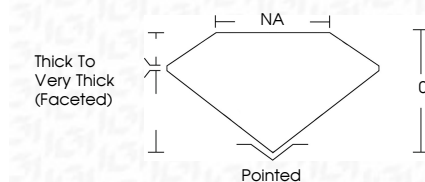
May 23, 2026
IGI Report Number **LG799625350**
Description **LABORATORY GROWN DIAMOND**
Shape and Cutting Style **FREEFORM**
Measurements **9.72 X 8.52 X 5.31 MM**
GRADING RESULTS
Carat Weight **2.66 CARATS**
Color Grade **F**
Clarity Grade **VS 2**

May 23, 2026
IGI Report Number **LG799625350**
Description **LABORATORY GROWN DIAMOND**
Shape and Cutting Style **FREEFORM**
Measurements **9.72 X 8.52 X 5.31 MM**
GRADING RESULTS
Carat Weight **2.66 CARATS**
Color Grade **F**
Clarity Grade **VS 2**

PROPORTIONS



Sample Image Used



ADDITIONAL GRADING INFORMATION
Polish **EXCELLENT**
Symmetry **EXCELLENT**
Fluorescence **NONE**
Inscription(s) **IGI LG799625350**
Comments: This Laboratory Grown Diamond was created by Chemical Vapor Deposition (CVD) growth process.
Type IIa

COLOR

D E F G H I J Faint Very Light Light

CLARITY

FL	IF	VS ¹⁻²	VS ¹⁻²	SI ¹⁻²	I ¹⁻³
Flawless	Internally Flawless	Very Very Slightly Included	Very Slightly Included	Slightly Included	Included

ADDITIONAL GRADING INFORMATION

Polish **EXCELLENT**
Symmetry **EXCELLENT**
Fluorescence **NONE**
Inscription(s) **IGI LG799625350**
Comments: This Laboratory Grown Diamond was created by Chemical Vapor Deposition (CVD) growth process.
Type IIa



May 23, 2026
IGI Report No LG799625350
FREEFORM
2.66 CARATS
F
9.72 X 8.52 X 5.31 MM
Color Grade
VS 2
0%
NA
Thick to Very Thick (Faceted)
Pointed
EXCELLENT
EXCELLENT
NONE
IGI LG799625350
Comments: This Laboratory Grown Diamond was created by Chemical Vapor Deposition (CVD) growth process.
Type IIa