



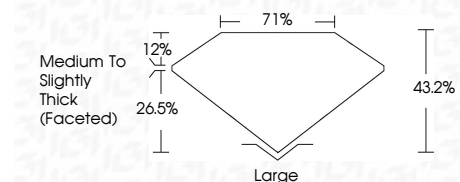
**ELECTRONIC COPY**

LG799625348  
Report verification at igi.org



May 22, 2026  
IGI Report Number **LG799625348**  
Description **LABORATORY GROWN DIAMOND**  
Shape and Cutting Style **PEAR MIXED CUT**  
Measurements **17.05 X 4.33 X 1.87 MM**

**GRADING RESULTS**  
Carat Weight **1.08 CARAT**  
Color Grade **F**  
Clarity Grade **VS 1**



**ADDITIONAL GRADING INFORMATION**  
Polish **VERY GOOD**  
Symmetry **VERY GOOD**  
Fluorescence **NONE**  
Inscription(s) **IGI LG799625348**  
Comments: This Laboratory Grown Diamond was created by Chemical Vapor Deposition (CVD) growth process. Type IIa



May 22, 2026  
IGI Report No LG799625348  
**PEAR MIXED CUT**  
17.05 X 4.33 X 1.87 MM  
1.08 CARAT  
F  
VS 1  
43.2%  
71%  
Medium to Slightly Thick (Faceted)  
Large  
VERY GOOD  
VERY GOOD  
NONE  
IGI LG799625348  
Comments: This Laboratory Grown Diamond was created by Chemical Vapor Deposition (CVD) growth process. Type IIa

**LABORATORY GROWN DIAMOND REPORT**

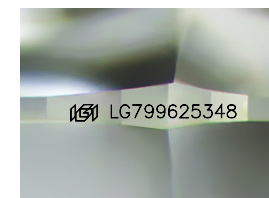
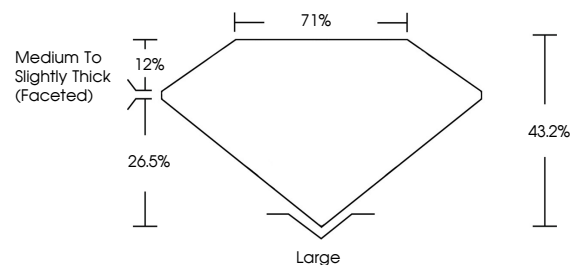
May 22, 2026  
IGI Report Number **LG799625348**  
Description **LABORATORY GROWN DIAMOND**  
Shape and Cutting Style **PEAR MIXED CUT**  
Measurements **17.05 X 4.33 X 1.87 MM**

**GRADING RESULTS**  
Carat Weight **1.08 CARAT**  
Color Grade **F**  
Clarity Grade **VS 1**

**ADDITIONAL GRADING INFORMATION**  
Polish **VERY GOOD**  
Symmetry **VERY GOOD**  
Fluorescence **NONE**  
Inscription(s) **IGI LG799625348**

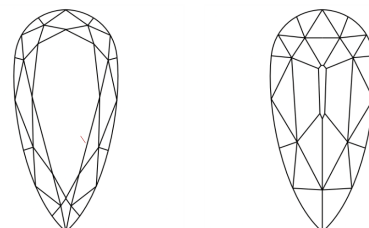
Comments: This Laboratory Grown Diamond was created by Chemical Vapor Deposition (CVD) growth process. Type IIa

**PROPORTIONS**



Sample Image Used

**CLARITY CHARACTERISTICS**



**KEY TO SYMBOLS**

Red symbols indicate internal characteristics.  
Green symbols indicate external characteristics.

**COLOR**

D E F G H I J Faint Very Light Light

**CLARITY**

FL	IF	VS <sup>1-2</sup>	VS <sup>1-2</sup>	SI <sup>1-2</sup>	I <sup>1-3</sup>
Flawless	Internally Flawless	Very Very Slightly Included	Very Slightly Included	Slightly Included	Included

