



ELECTRONIC COPY

LG799625091
Report verification at igi.org



May 18, 2026
IGI Report Number **LG799625091**
Description **LABORATORY GROWN DIAMOND**
Shape and Cutting Style **SQUARE CUSHION MODIFIED BRILLIANT**
Measurements **6.23 X 6.03 X 4.01 MM**
GRADING RESULTS
Carat Weight **1.38 CARAT**
Color Grade **FANCY VIVID YELLOW**
Clarity Grade **VVS 2**

LABORATORY GROWN DIAMOND REPORT

May 18, 2026
IGI Report Number **LG799625091**
Description **LABORATORY GROWN DIAMOND**
Shape and Cutting Style **SQUARE CUSHION MODIFIED BRILLIANT**
Measurements **6.23 X 6.03 X 4.01 MM**

GRADING RESULTS

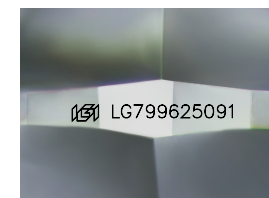
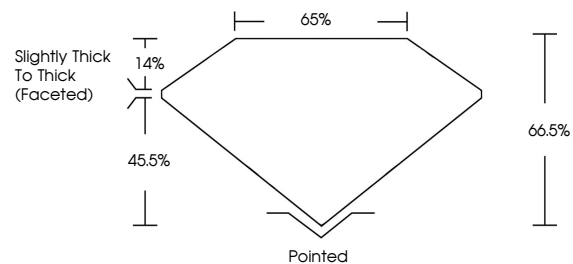
Carat Weight **1.38 CARAT**
Color Grade **FANCY VIVID YELLOW**
Clarity Grade **VVS 2**

ADDITIONAL GRADING INFORMATION

Polish **EXCELLENT**
Symmetry **VERY GOOD**
Fluorescence **NONE**
Inscription(s) **IGI LG799625091**

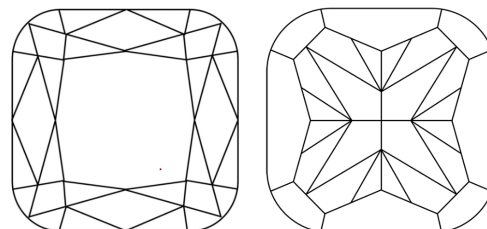
Comments: This Laboratory Grown Diamond was created by Chemical Vapor Deposition (CVD) growth process.

PROPORTIONS



Sample Image Used

CLARITY CHARACTERISTICS



KEY TO SYMBOLS

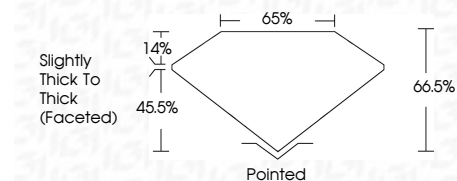
Red symbols indicate internal characteristics.
Green symbols indicate external characteristics.

COLOR

D E F G H I J Faint Very Light Light

CLARITY

FL	IF	VVS ¹⁻²	VS ¹⁻²	SI ¹⁻²	I ¹⁻³
Flawless	Internally Flawless	Very Very Slightly Included	Very Slightly Included	Slightly Included	Included



ADDITIONAL GRADING INFORMATION

Polish **EXCELLENT**
Symmetry **VERY GOOD**
Fluorescence **NONE**
Inscription(s) **IGI LG799625091**
Comments: This Laboratory Grown Diamond was created by Chemical Vapor Deposition (CVD) growth process.



May 18, 2026
IGI Report No. LG799625091
SQUARE CUSHION MODIFIED BRILLIANT
6.23 X 6.03 X 4.01 MM
1.38 CARAT
FANCY VIVID YELLOW
VVS 2
66.5%
45.5%
Slightly Thick To Thick (Faceted)
Pointed
EXCELLENT
VERY GOOD
NONE
IGI LG799625091
Comments: This Laboratory Grown Diamond was created by Chemical Vapor Deposition (CVD) growth process.