



ELECTRONIC COPY

LG799625074
Report verification at igi.org



May 18, 2026
IGI Report Number **LG799625074**
Description **LABORATORY GROWN DIAMOND**
Shape and Cutting Style **SQUARE CUSHION MODIFIED BRILLIANT**
Measurements **5.56 X 5.55 X 3.74 MM**
GRADING RESULTS
Carat Weight **1.10 CARAT**
Color Grade **FANCY YELLOW**
Clarity Grade **VVS 2**

LABORATORY GROWN DIAMOND REPORT

May 18, 2026
IGI Report Number **LG799625074**
Description **LABORATORY GROWN DIAMOND**
Shape and Cutting Style **SQUARE CUSHION MODIFIED BRILLIANT**
Measurements **5.56 X 5.55 X 3.74 MM**

GRADING RESULTS

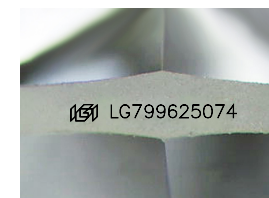
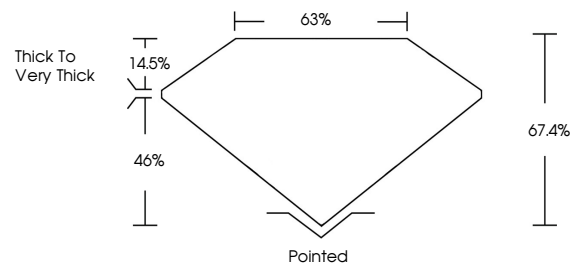
Carat Weight **1.10 CARAT**
Color Grade **FANCY YELLOW**
Clarity Grade **VVS 2**

ADDITIONAL GRADING INFORMATION

Polish **EXCELLENT**
Symmetry **EXCELLENT**
Fluorescence **NONE**
Inscription(s) **IGI LG799625074**

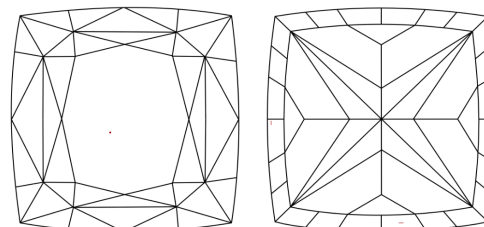
Comments: This Laboratory Grown Diamond was created by Chemical Vapor Deposition (CVD) growth process.

PROPORTIONS



Sample Image Used

CLARITY CHARACTERISTICS



KEY TO SYMBOLS

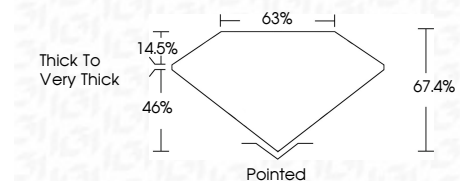
Red symbols indicate internal characteristics.
Green symbols indicate external characteristics.

COLOR

D E F G H I J Faint Very Light Light

CLARITY

FL	IF	VVS ¹⁻²	VS ¹⁻²	SI ¹⁻²	I ¹⁻³
Flawless	Internally Flawless	Very Very Slightly Included	Very Slightly Included	Slightly Included	Included



ADDITIONAL GRADING INFORMATION

Polish **EXCELLENT**
Symmetry **EXCELLENT**
Fluorescence **NONE**
Inscription(s) **IGI LG799625074**
Comments: This Laboratory Grown Diamond was created by Chemical Vapor Deposition (CVD) growth process.



May 18, 2026
IGI Report No **LG799625074**
SQUARE CUSHION MODIFIED BRILLIANT
1.10 CARAT
FANCY YELLOW
VVS 2
5.56 X 5.55 X 3.74 MM
67.4%
63%
Thick to Very Thick
Pointed
EXCELLENT
EXCELLENT
NONE
IGI LG799625074
Comments: This Laboratory Grown Diamond was created by Chemical Vapor Deposition (CVD) growth process.