



ELECTRONIC COPY

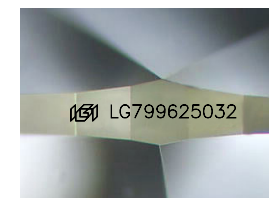
LG799625032
Report verification at igi.org



May 18, 2026
IGI Report Number **LG799625032**
Description **LABORATORY GROWN DIAMOND**

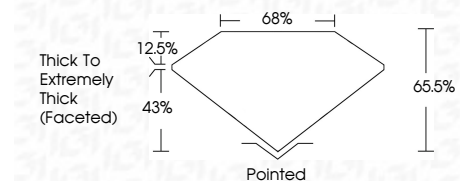
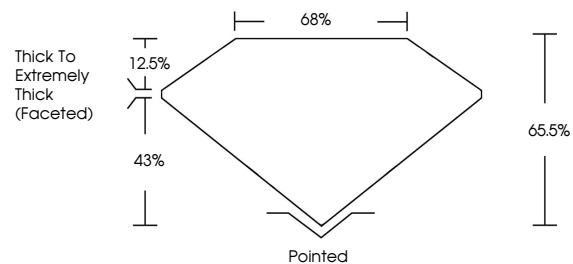
Shape and Cutting Style **PEAR MODIFIED BRILLIANT**
Measurements **8.42 X 5.21 X 3.41 MM**

GRADING RESULTS
Carat Weight **1.12 CARAT**
Color Grade **FANCY INTENSE YELLOW**
Clarity Grade **VS 2**

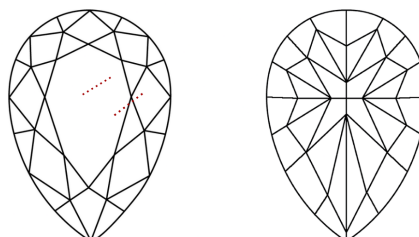


Sample Image Used

PROPORTIONS



CLARITY CHARACTERISTICS



KEY TO SYMBOLS

Red symbols indicate internal characteristics.
Green symbols indicate external characteristics.

COLOR

D E F G H I J Faint Very Light Light

CLARITY

FL	IF	VS ¹⁻²	VS ¹⁻²	SI ¹⁻²	I ¹⁻³
Flawless	Internally Flawless	Very Very Slightly Included	Very Slightly Included	Slightly Included	Included

ADDITIONAL GRADING INFORMATION

Polish **EXCELLENT**
Symmetry **EXCELLENT**
Fluorescence **NONE**
Inscription(s) **(IGI) LG799625032**
Comments: This Laboratory Grown Diamond was created by Chemical Vapor Deposition (CVD) growth process.



May 18, 2026
IGI Report No LG799625032
PEAR MODIFIED BRILLIANT
8.42 X 5.21 X 3.41 MM
1.12 CARAT
Color Grade **FANCY INTENSE YELLOW**
Clarity Grade **VS 2**
Depth **65.5%**
Table **68%**
Girdle **Thick To Extremely Thick (Faceted)**
Culet **Pointed**
Polish **EXCELLENT**
Symmetry **EXCELLENT**
Fluorescence **NONE**
Inscription(s) **(IGI) LG799625032**
Comments: This Laboratory Grown Diamond was created by Chemical Vapor Deposition (CVD) growth process.