



ELECTRONIC COPY

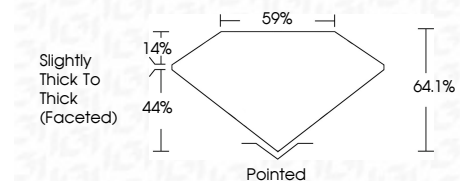
LG799625021
Report verification at igi.org



May 18, 2026
IGI Report Number **LG799625021**
Description **LABORATORY GROWN DIAMOND**

Shape and Cutting Style **PEAR MODIFIED BRILLIANT**
Measurements **10.09 X 6.08 X 3.90 MM**

GRADING RESULTS
Carat Weight **1.68 CARAT**
Color Grade **FANCY INTENSE YELLOW**
Clarity Grade **VVS 2**



ADDITIONAL GRADING INFORMATION
Polish **EXCELLENT**
Symmetry **EXCELLENT**
Fluorescence **NONE**
Inscription(s) **IGI LG799625021**
Comments: This Laboratory Grown Diamond was created by Chemical Vapor Deposition (CVD) growth process.



May 18, 2026
IGI Report No LG799625021
PEAR MODIFIED BRILLIANT
10.09 X 6.08 X 3.90 MM
1.68 CARAT
Color Grade **FANCY INTENSE YELLOW**
Clarity Grade **VVS 2**
Depth **64.1%**
Table **14%**
Girdle **Slightly Thick To Thick (Faceted)**
Culet **Pointed**
Polish **EXCELLENT**
Symmetry **EXCELLENT**
Fluorescence **NONE**
Inscription(s) **IGI LG799625021**
Comments: This Laboratory Grown Diamond was created by Chemical Vapor Deposition (CVD) growth process.

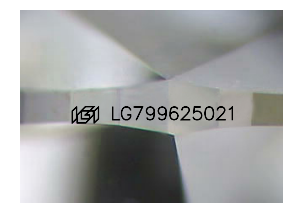
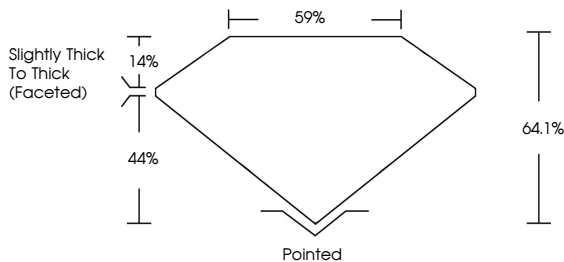
May 18, 2026
IGI Report Number **LG799625021**
Description **LABORATORY GROWN DIAMOND**
Shape and Cutting Style **PEAR MODIFIED BRILLIANT**
Measurements **10.09 X 6.08 X 3.90 MM**

GRADING RESULTS
Carat Weight **1.68 CARAT**
Color Grade **FANCY INTENSE YELLOW**
Clarity Grade **VVS 2**

ADDITIONAL GRADING INFORMATION
Polish **EXCELLENT**
Symmetry **EXCELLENT**
Fluorescence **NONE**
Inscription(s) **IGI LG799625021**

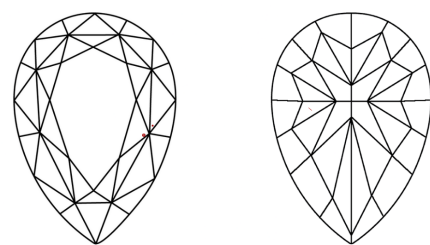
Comments: This Laboratory Grown Diamond was created by Chemical Vapor Deposition (CVD) growth process.

PROPORTIONS



Sample Image Used

CLARITY CHARACTERISTICS



KEY TO SYMBOLS

Red symbols indicate internal characteristics.
Green symbols indicate external characteristics.

COLOR

| | | | | | | | | | |
|---|---|---|---|---|---|---|-------|------------|-------|
| D | E | F | G | H | I | J | Faint | Very Light | Light |
|---|---|---|---|---|---|---|-------|------------|-------|

CLARITY

| | | | | | |
|----------|---------------------|-----------------------------|------------------------|-------------------|------------------|
| FL | IF | VVS ¹⁻² | VS ¹⁻² | SI ¹⁻² | I ¹⁻³ |
| Flawless | Internally Flawless | Very Very Slightly Included | Very Slightly Included | Slightly Included | Included |

