



**ELECTRONIC COPY**

LG799624929  
Report verification at igi.org



May 18, 2026  
IGI Report Number **LG799624929**  
Description **LABORATORY GROWN DIAMOND**  
Shape and Cutting Style **CUT CORNERED  
RECTANGULAR MIXED CUT**  
Measurements **7.40 X 5.29 X 3.73 MM**  
**GRADING RESULTS**  
Carat Weight **1.40 CARAT**  
Color Grade **FANCY VIVID YELLOW**  
Clarity Grade **VS 1**

**LABORATORY GROWN DIAMOND REPORT**

May 18, 2026  
IGI Report Number **LG799624929**  
Description **LABORATORY GROWN DIAMOND**  
Shape and Cutting Style **CUT CORNERED RECTANGULAR  
MIXED CUT**  
Measurements **7.40 X 5.29 X 3.73 MM**

**GRADING RESULTS**

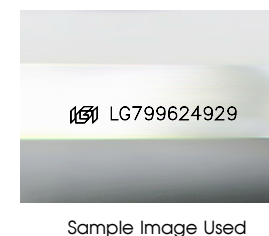
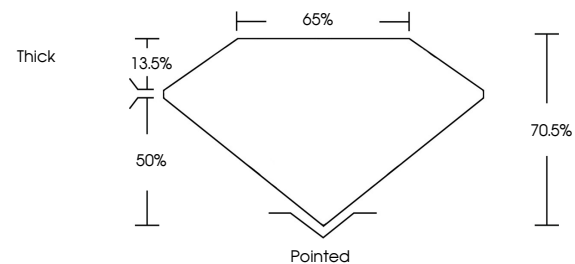
Carat Weight **1.40 CARAT**  
Color Grade **FANCY VIVID YELLOW**  
Clarity Grade **VS 1**

**ADDITIONAL GRADING INFORMATION**

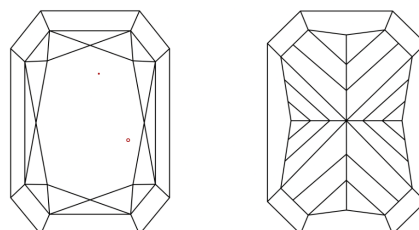
Polish **EXCELLENT**  
Symmetry **EXCELLENT**  
Fluorescence **NONE**  
Inscription(s) **IGI LG799624929**

Comments: This Laboratory Grown Diamond was created by Chemical Vapor Deposition (CVD) growth process.

**PROPORTIONS**



**CLARITY CHARACTERISTICS**



**KEY TO SYMBOLS**

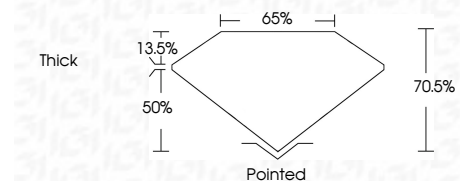
Red symbols indicate internal characteristics.  
Green symbols indicate external characteristics.

**COLOR**

D E F G H I J Faint Very Light Light

**CLARITY**

FL	IF	VS <sup>1-2</sup>	VS <sup>1-2</sup>	SI <sup>1-2</sup>	I <sup>1-3</sup>
Flawless	Internally Flawless	Very Very Slightly Included	Very Slightly Included	Slightly Included	Included



**ADDITIONAL GRADING INFORMATION**

Polish **EXCELLENT**  
Symmetry **EXCELLENT**  
Fluorescence **NONE**  
Inscription(s) **IGI LG799624929**  
Comments: This Laboratory Grown Diamond was created by Chemical Vapor Deposition (CVD) growth process.



May 18, 2026  
IGI Report No. **LG799624929**  
**CUT CORNERED RECT. MIXED CUT**  
**1.40 CARAT**  
Carat Weight **FANCY VIVID YELLOW**  
Color Grade **VS 1**  
Depth **70.6%**  
Table **65%**  
Girdle **Thick**  
Culet **Pointed**  
Polish **EXCELLENT**  
Symmetry **EXCELLENT**  
Fluorescence **NONE**  
Inscription(s) **IGI LG799624929**  
Comments: This Laboratory Grown Diamond was created by Chemical Vapor Deposition (CVD) growth process.