



ELECTRONIC COPY

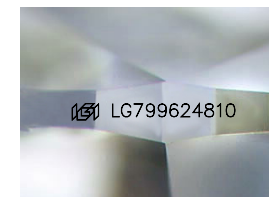
LG799624810
Report verification at igi.org



May 18, 2026
IGI Report Number **LG799624810**
Description **LABORATORY GROWN DIAMOND**

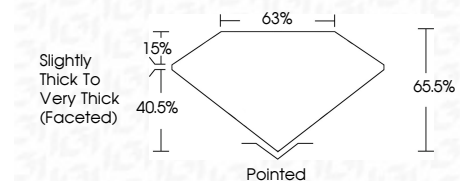
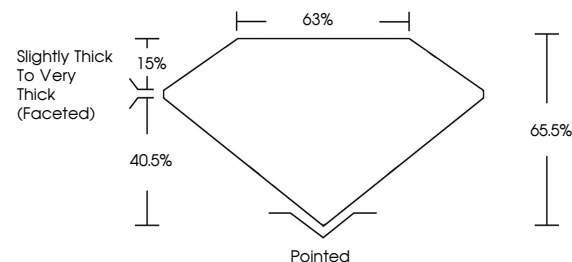
Shape and Cutting Style **PEAR MODIFIED BRILLIANT**
Measurements **8.40 X 5.16 X 3.38 MM**

GRADING RESULTS
Carat Weight **1.07 CARAT**
Color Grade **FANCY INTENSE YELLOW**
Clarity Grade **VVS 2**

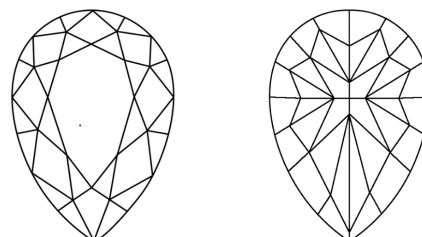


Sample Image Used

PROPORTIONS



CLARITY CHARACTERISTICS



KEY TO SYMBOLS

Red symbols indicate internal characteristics.
Green symbols indicate external characteristics.

COLOR

D E F G H I J Faint Very Light Light

CLARITY

FL	IF	VVS ¹⁻²	VS ¹⁻²	SI ¹⁻²	I ¹⁻³
Flawless	Internally Flawless	Very Very Slightly Included	Very Slightly Included	Slightly Included	Included

ADDITIONAL GRADING INFORMATION

Polish **VERY GOOD**
Symmetry **EXCELLENT**
Fluorescence **NONE**
Inscription(s) **IGI LG799624810**
Comments: This Laboratory Grown Diamond was created by Chemical Vapor Deposition (CVD) growth process.



May 18, 2026
IGI Report No LG799624810
PEAR MODIFIED BRILLIANT
8.40 X 5.16 X 3.38 MM
1.07 CARAT
FANCY INTENSE YELLOW
VVS 2
65.5%
Slightly Thick To Very Thick (Faceted)
Pointed
VERY GOOD
EXCELLENT
NONE
IGI LG799624810
Comments: This Laboratory Grown Diamond was created by Chemical Vapor Deposition (CVD) growth process.