



ELECTRONIC COPY

LG799624809
Report verification at igi.org



May 18, 2026
IGI Report Number **LG799624809**
Description **LABORATORY GROWN DIAMOND**
Shape and Cutting Style **CUT CORNERED
RECTANGULAR MODIFIED
BRILLIANT**
Measurements **7.00 X 4.95 X 3.21 MM**
GRADING RESULTS
Carat Weight **1.06 CARAT**
Color Grade **FANCY INTENSE YELLOW**
Clarity Grade **VS 2**

May 18, 2026
IGI Report Number **LG799624809**
Description **LABORATORY GROWN DIAMOND**
Shape and Cutting Style **CUT CORNERED RECTANGULAR
MODIFIED BRILLIANT**
Measurements **7.00 X 4.95 X 3.21 MM**

GRADING RESULTS

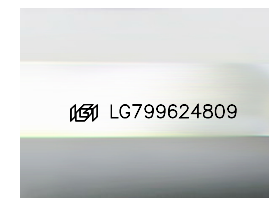
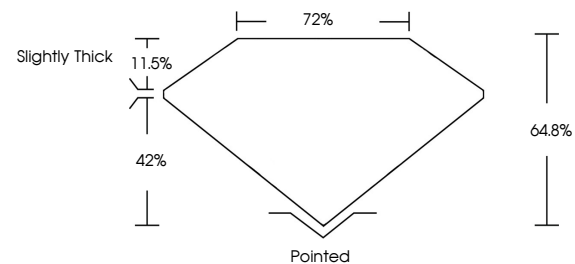
Carat Weight **1.06 CARAT**
Color Grade **FANCY INTENSE YELLOW**
Clarity Grade **VS 2**

ADDITIONAL GRADING INFORMATION

Polish **EXCELLENT**
Symmetry **VERY GOOD**
Fluorescence **NONE**
Inscription(s) **IGI LG799624809**

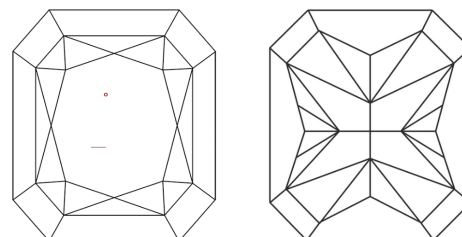
Comments: This Laboratory Grown Diamond was created by Chemical Vapor Deposition (CVD) growth process.

PROPORTIONS



Sample Image Used

CLARITY CHARACTERISTICS



KEY TO SYMBOLS

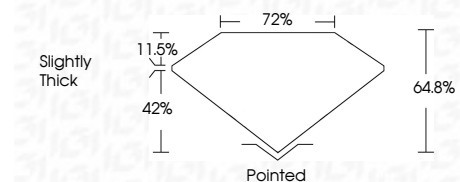
Red symbols indicate internal characteristics.
Green symbols indicate external characteristics.

COLOR

D E F G H I J Faint Very Light Light

CLARITY

FL	IF	VS ¹⁻²	VS ¹⁻²	SI ¹⁻²	I ¹⁻³
Flawless	Internally Flawless	Very Very Slightly Included	Very Slightly Included	Slightly Included	Included



ADDITIONAL GRADING INFORMATION

Polish **EXCELLENT**
Symmetry **VERY GOOD**
Fluorescence **NONE**
Inscription(s) **IGI LG799624809**
Comments: This Laboratory Grown Diamond was created by Chemical Vapor Deposition (CVD) growth process.



IGI



May 18, 2026
IGI Report No. LG799624809
CUT CORNERED RECT. MODIFIED BRILLIANT
7.00 X 4.95 X 3.21 MM
Carat Weight 1.06 CARAT
Color Grade FANCY INTENSE YELLOW
Clarity Grade VS 2
Depth 42%
Table 72%
Girdle Slightly Thick
Culet Pointed
Polish EXCELLENT
Symmetry VERY GOOD
Fluorescence NONE
Inscription(s) IGI LG799624809
Comments: This Laboratory Grown Diamond was created by Chemical Vapor Deposition (CVD) growth process.