



**ELECTRONIC COPY**

LG799624773  
Report verification at igi.org



May 18, 2026  
IGI Report Number **LG799624773**  
Description **LABORATORY GROWN DIAMOND**  
Shape and Cutting Style **CUT CORNERED  
RECTANGULAR MIXED CUT**  
Measurements **6.57 X 4.88 X 3.33 MM**  
**GRADING RESULTS**  
Carat Weight **1.02 CARAT**  
Color Grade **FANCY INTENSE YELLOW**  
Clarity Grade **SI 1**

**LABORATORY GROWN DIAMOND REPORT**

May 18, 2026  
IGI Report Number **LG799624773**  
Description **LABORATORY GROWN DIAMOND**  
Shape and Cutting Style **CUT CORNERED RECTANGULAR  
MIXED CUT**  
Measurements **6.57 X 4.88 X 3.33 MM**

**GRADING RESULTS**

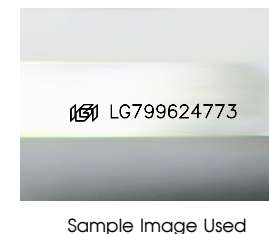
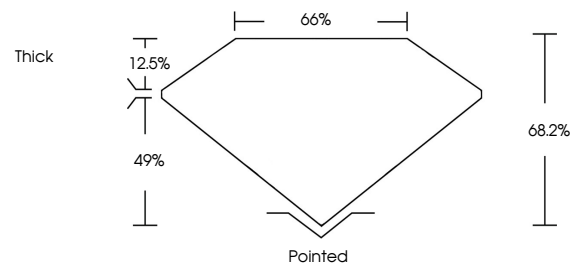
Carat Weight **1.02 CARAT**  
Color Grade **FANCY INTENSE YELLOW**  
Clarity Grade **SI 1**

**ADDITIONAL GRADING INFORMATION**

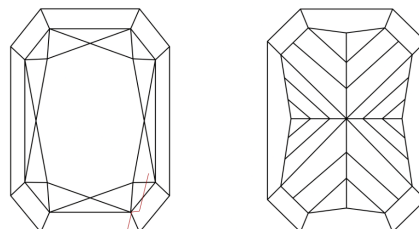
Polish **EXCELLENT**  
Symmetry **EXCELLENT**  
Fluorescence **NONE**  
Inscription(s) **IGI LG799624773**

Comments: This Laboratory Grown Diamond was created by Chemical Vapor Deposition (CVD) growth process.

**PROPORTIONS**



**CLARITY CHARACTERISTICS**



**KEY TO SYMBOLS**

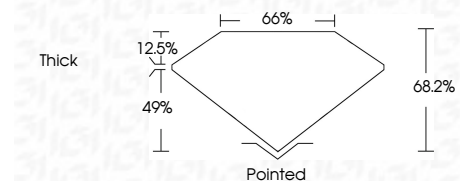
Red symbols indicate internal characteristics.  
Green symbols indicate external characteristics.

**COLOR**

D E F G H I J Faint Very Light Light

**CLARITY**

FL	IF	VS <sup>1-2</sup>	VS <sup>1-2</sup>	SI <sup>1-2</sup>	I <sup>1-3</sup>
Flawless	Internally Flawless	Very Very Slightly Included	Very Slightly Included	Slightly Included	Included



**ADDITIONAL GRADING INFORMATION**

Polish **EXCELLENT**  
Symmetry **EXCELLENT**  
Fluorescence **NONE**  
Inscription(s) **IGI LG799624773**  
Comments: This Laboratory Grown Diamond was created by Chemical Vapor Deposition (CVD) growth process.



May 18, 2026  
IGI Report No LG799624773  
CUT CORNERED RECT. MIXED CUT  
6.57 X 4.88 X 3.33 MM  
1.02 CARAT  
FANCY INTENSE YELLOW  
SI 1  
68.2%  
66%  
Thick  
Pointed  
EXCELLENT  
EXCELLENT  
NONE  
IGI LG799624773

Comments: This Laboratory Grown Diamond was created by Chemical Vapor Deposition (CVD) growth process.