



ELECTRONIC COPY

LG799624765
Report verification at igi.org



May 18, 2026

IGI Report Number **LG799624765**

Description **LABORATORY GROWN DIAMOND**

Shape and Cutting Style **CUT CORNERED
RECTANGULAR MODIFIED
BRILLIANT**

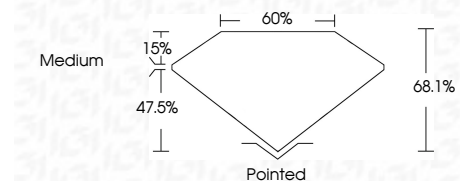
Measurements **7.01 X 5.01 X 3.41 MM**

GRADING RESULTS

Carat Weight **1.11 CARAT**

Color Grade **FANCY VIVID YELLOW**

Clarity Grade **SI 2**



ADDITIONAL GRADING INFORMATION

Polish **EXCELLENT**

Symmetry **EXCELLENT**

Fluorescence **NONE**

Inscription(s) **IGI LG799624765**

Comments: This Laboratory Grown Diamond was created by Chemical Vapor Deposition (CVD) growth process.



May 18, 2026	IGI Report No LG799624765	CUT CORNERED RECT. MODIFIED BRILLIANT
7.01 X 5.01 X 3.41 MM	1.11 CARAT	FANCY VIVID YELLOW
SI 2	68.1%	Medium
Pointed	EXCELLENT	EXCELLENT
NONE	IGI LG799624765	

Comments: This Laboratory Grown Diamond was created by Chemical Vapor Deposition (CVD) growth process.

LABORATORY GROWN DIAMOND REPORT

May 18, 2026

IGI Report Number **LG799624765**

Description **LABORATORY GROWN DIAMOND**

Shape and Cutting Style **CUT CORNERED RECTANGULAR
MODIFIED BRILLIANT**

Measurements **7.01 X 5.01 X 3.41 MM**

GRADING RESULTS

Carat Weight **1.11 CARAT**

Color Grade **FANCY VIVID YELLOW**

Clarity Grade **SI 2**

ADDITIONAL GRADING INFORMATION

Polish **EXCELLENT**

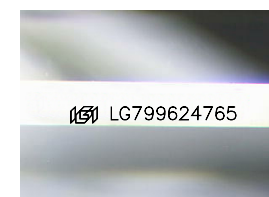
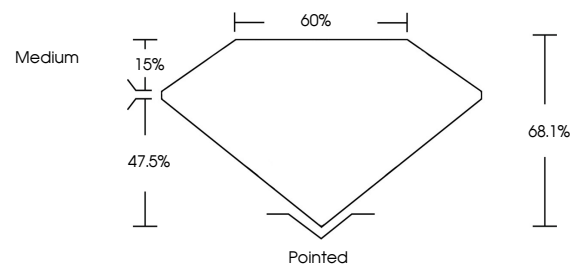
Symmetry **EXCELLENT**

Fluorescence **NONE**

Inscription(s) **IGI LG799624765**

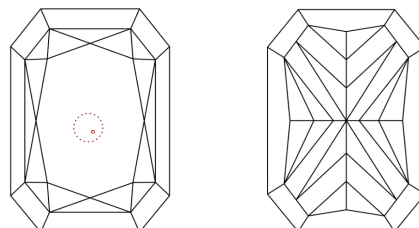
Comments: This Laboratory Grown Diamond was created by Chemical Vapor Deposition (CVD) growth process.

PROPORTIONS



Sample Image Used

CLARITY CHARACTERISTICS



KEY TO SYMBOLS

Red symbols indicate internal characteristics.
Green symbols indicate external characteristics.

COLOR

D E F G H I J Faint Very Light Light

CLARITY

FL	IF	VS ¹⁻²	VS ¹⁻²	SI ¹⁻²	I ¹⁻³
Flawless	Internally Flawless	Very Very Slightly Included	Very Slightly Included	Slightly Included	Included

