



**ELECTRONIC COPY**

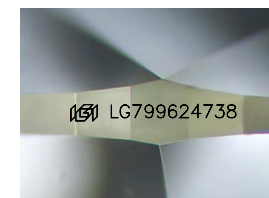
LG799624738  
Report verification at igi.org



May 18, 2026  
IGI Report Number **LG799624738**  
Description **LABORATORY GROWN DIAMOND**

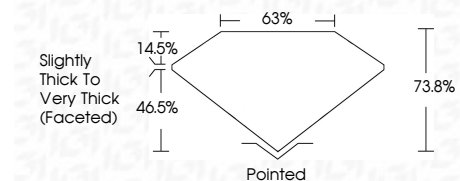
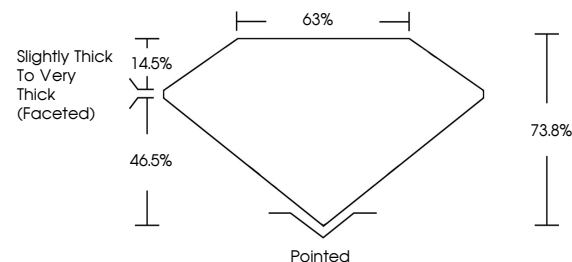
Shape and Cutting Style **PEAR MODIFIED BRILLIANT**  
Measurements **7.90 X 4.88 X 3.60 MM**

**GRADING RESULTS**  
Carat Weight **1.07 CARAT**  
Color Grade **FANCY VIVID YELLOW**  
Clarity Grade **VVS 2**

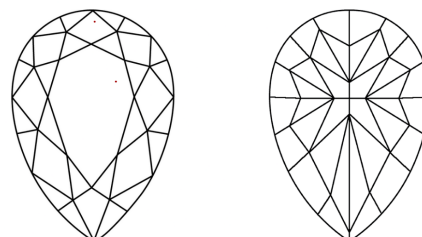


Sample Image Used

**PROPORTIONS**



**CLARITY CHARACTERISTICS**



**KEY TO SYMBOLS**

Red symbols indicate internal characteristics.  
Green symbols indicate external characteristics.

**COLOR**

D E F G H I J Faint Very Light Light

**CLARITY**

FL	IF	VVS <sup>1-2</sup>	VS <sup>1-2</sup>	SI <sup>1-2</sup>	I <sup>1-3</sup>
Flawless	Internally Flawless	Very Very Slightly Included	Very Slightly Included	Slightly Included	Included

**ADDITIONAL GRADING INFORMATION**

Polish **VERY GOOD**  
Symmetry **VERY GOOD**  
Fluorescence **NONE**  
Inscription(s) **IGI LG799624738**  
Comments: This Laboratory Grown Diamond was created by Chemical Vapor Deposition (CVD) growth process.



May 18, 2026  
IGI Report No LG799624738  
**PEAR MODIFIED BRILLIANT**  
7.90 X 4.88 X 3.60 MM  
1.07 CARAT  
FANCY VIVID YELLOW  
VVS 2  
73.8%  
63%  
Slightly Thick To Very Thick (Faceted)  
Pointed  
Polish VERY GOOD  
Symmetry VERY GOOD  
Fluorescence NONE  
Inscription(s) IGI LG799624738  
Comments: This Laboratory Grown Diamond was created by Chemical Vapor Deposition (CVD) growth process.