



ELECTRONIC COPY

LG799624641
Report verification at igi.org



May 18, 2026
IGI Report Number **LG799624641**
Description **LABORATORY GROWN DIAMOND**
Shape and Cutting Style **CUT CORNERED
RECTANGULAR MIXED CUT**
Measurements **8.28 X 6.17 X 4.34 MM**
GRADING RESULTS
Carat Weight **2.18 CARATS**
Color Grade **FANCY INTENSE YELLOW**
Clarity Grade **VS 1**

LABORATORY GROWN DIAMOND REPORT

May 18, 2026
IGI Report Number **LG799624641**
Description **LABORATORY GROWN DIAMOND**
Shape and Cutting Style **CUT CORNERED RECTANGULAR
MIXED CUT**
Measurements **8.28 X 6.17 X 4.34 MM**

GRADING RESULTS

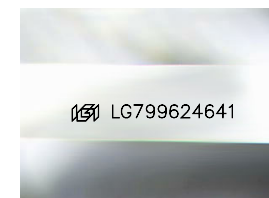
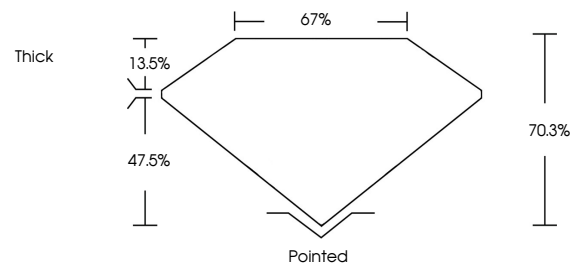
Carat Weight **2.18 CARATS**
Color Grade **FANCY INTENSE YELLOW**
Clarity Grade **VS 1**

ADDITIONAL GRADING INFORMATION

Polish **EXCELLENT**
Symmetry **FAIR**
Fluorescence **NONE**
Inscription(s) **IGI LG799624641**

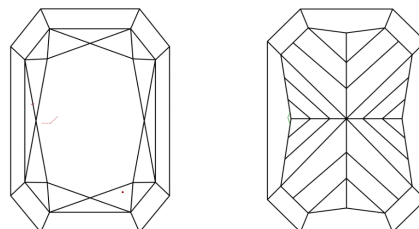
Comments: This Laboratory Grown Diamond was created by Chemical Vapor Deposition (CVD) growth process.

PROPORTIONS



Sample Image Used

CLARITY CHARACTERISTICS



KEY TO SYMBOLS

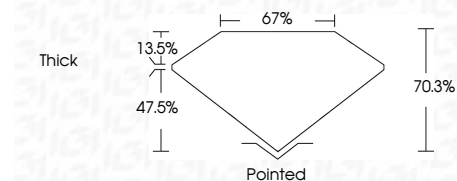
Red symbols indicate internal characteristics.
Green symbols indicate external characteristics.

COLOR

D E F G H I J Faint Very Light Light

CLARITY

FL	IF	VS ¹⁻²	VS ¹⁻²	SI ¹⁻²	I ¹⁻³
Flawless	Internally Flawless	Very Very Slightly Included	Very Slightly Included	Slightly Included	Included



ADDITIONAL GRADING INFORMATION

Polish **EXCELLENT**
Symmetry **FAIR**
Fluorescence **NONE**
Inscription(s) **IGI LG799624641**
Comments: This Laboratory Grown Diamond was created by Chemical Vapor Deposition (CVD) growth process.



May 18, 2026
IGI Report No LG799624641
CUT CORNERED RECT. MIXED CUT
2.18 CARATS
FANCY INTENSE YELLOW
VS 1
70.3%
67%
Thick
Pointed
EXCELLENT
FAIR
NONE
IGI LG799624641
Comments: This Laboratory Grown Diamond was created by Chemical Vapor Deposition (CVD) growth process.