



ELECTRONIC COPY

LG799624542
Report verification at igi.org



May 18, 2026

IGI Report Number **LG799624542**

Description **LABORATORY GROWN DIAMOND**

Shape and Cutting Style **OVAL MODIFIED BRILLIANT**

Measurements **10.04 X 6.97 X 4.66 MM**

GRADING RESULTS

Carat Weight **2.54 CARATS**

Color Grade **FANCY INTENSE YELLOW**

Clarity Grade **VVS 2**

May 18, 2026
IGI Report Number **LG799624542**
Description **LABORATORY GROWN DIAMOND**
Shape and Cutting Style **OVAL MODIFIED BRILLIANT**
Measurements **10.04 X 6.97 X 4.66 MM**

GRADING RESULTS

Carat Weight **2.54 CARATS**

Color Grade **FANCY INTENSE YELLOW**

Clarity Grade **VVS 2**

ADDITIONAL GRADING INFORMATION

Polish **EXCELLENT**

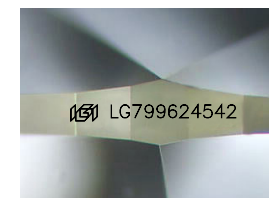
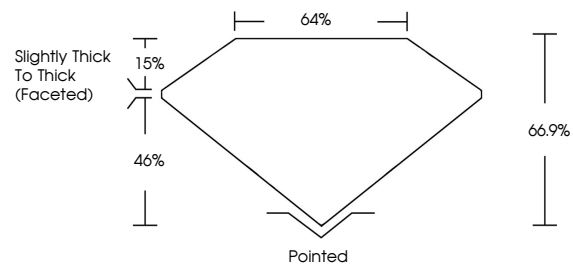
Symmetry **EXCELLENT**

Fluorescence **NONE**

Inscription(s) **IGI LG799624542**

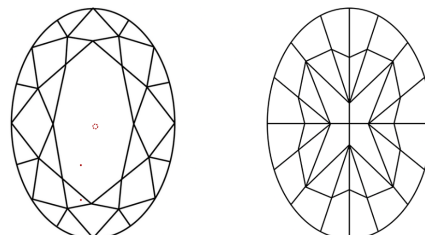
Comments: This Laboratory Grown Diamond was created by Chemical Vapor Deposition (CVD) growth process.

PROPORTIONS



Sample Image Used

CLARITY CHARACTERISTICS



KEY TO SYMBOLS

Red symbols indicate internal characteristics.
Green symbols indicate external characteristics.

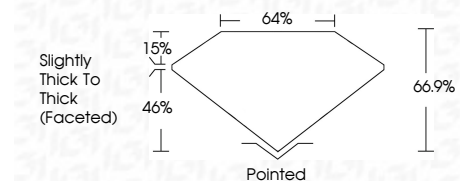
COLOR

D E F G H I J Faint Very Light Light

CLARITY

FL IF VVS¹⁻² VS¹⁻² SI¹⁻² I¹⁻³

Flawless Internally Flawless Very Very Slightly Included Very Slightly Included Slightly Included Included



ADDITIONAL GRADING INFORMATION

Polish **EXCELLENT**

Symmetry **EXCELLENT**

Fluorescence **NONE**

Inscription(s) **IGI LG799624542**

Comments: This Laboratory Grown Diamond was created by Chemical Vapor Deposition (CVD) growth process.



IGI



May 18, 2026
IGI Report No **LG799624542**
OVAL MODIFIED BRILLIANT
Carat Weight **2.54 CARATS**
Color Grade **FANCY INTENSE YELLOW**
Clarity Grade **VVS 2**
Table **64%**
Depth **66.9%**
Girdle **Slightly Thick To Thick (Faceted)**
Culet **Pointed**
Polish **EXCELLENT**
Symmetry **EXCELLENT**
Fluorescence **NONE**
Inscription(s) **IGI LG799624542**
Comments: This Laboratory Grown Diamond was created by Chemical Vapor Deposition (CVD) growth process.