



**ELECTRONIC COPY**

LG799623086  
Report verification at igi.org



May 7, 2026

IGI Report Number **LG799623086**

Description **LABORATORY GROWN DIAMOND**

Shape and Cutting Style **OLD EUROPEAN CUT**

Measurements **9.22 - 9.28 X 5.48 MM**

**GRADING RESULTS**

Carat Weight **3.03 CARATS**

Color Grade **F**

Clarity Grade **VS 2**

May 7, 2026

IGI Report Number **LG799623086**

Description **LABORATORY GROWN DIAMOND**

Shape and Cutting Style **OLD EUROPEAN CUT**

Measurements **9.22 - 9.28 X 5.48 MM**

**GRADING RESULTS**

Carat Weight **3.03 CARATS**

Color Grade **F**

Clarity Grade **VS 2**

**ADDITIONAL GRADING INFORMATION**

Polish **EXCELLENT**

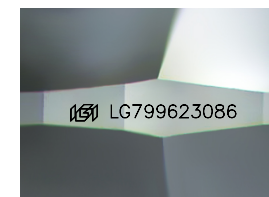
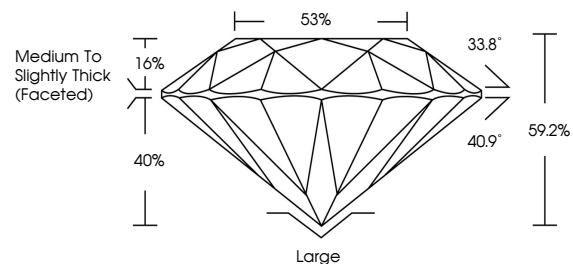
Symmetry **EXCELLENT**

Fluorescence **NONE**

Inscription(s) **IGI LG799623086**

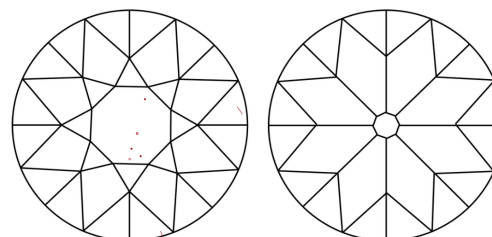
Comments: This Laboratory Grown Diamond was created by Chemical Vapor Deposition (CVD) growth process.  
Type IIa

**PROPORTIONS**



Sample Image Used

**CLARITY CHARACTERISTICS**



**KEY TO SYMBOLS**

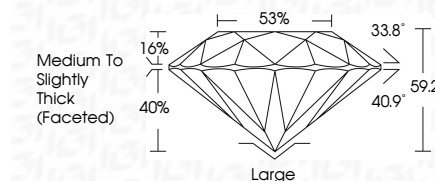
Red symbols indicate internal characteristics.  
Green symbols indicate external characteristics.

**COLOR**

D E F G H I J Faint Very Light Light

**CLARITY**

FL	IF	VS <sup>1-2</sup>	VS <sup>1-2</sup>	SI <sup>1-2</sup>	I <sup>1-3</sup>
Flawless	Internally Flawless	Very Very Slightly Included	Very Slightly Included	Slightly Included	Included



**ADDITIONAL GRADING INFORMATION**

Polish **EXCELLENT**

Symmetry **EXCELLENT**

Fluorescence **NONE**

Inscription(s) **IGI LG799623086**

Comments: This Laboratory Grown Diamond was created by Chemical Vapor Deposition (CVD) growth process.  
Type IIa



**IGI**



May 7, 2026  
IGI Report No LG799623086  
**OLD EUROPEAN CUT**  
9.22 - 9.28 X 5.48 MM  
3.03 CARATS  
F  
3.03 CARATS  
F  
VS 2  
59.2%  
40%  
53%  
33.8°  
40.9°  
Large  
Medium to Slightly Thick (Faceted)  
EXCELLENT  
EXCELLENT  
NONE  
IGI LG799623086  
Comments: This Laboratory Grown Diamond was created by Chemical Vapor Deposition (CVD) growth process.  
Type IIa