



**ELECTRONIC COPY**

LG799622690  
Report verification at igi.org



May 25, 2026  
IGI Report Number **LG799622690**  
Description **LABORATORY GROWN DIAMOND**  
Shape and Cutting Style **EMERALD CUT**  
Measurements **17.79 X 12.76 X 7.77 MM**  
**GRADING RESULTS**  
Carat Weight **19.02 CARATS**  
Color Grade **FANCY INTENSE PINK**  
Clarity Grade **VS 1**

May 25, 2026  
IGI Report Number **LG799622690**  
Description **LABORATORY GROWN DIAMOND**  
Shape and Cutting Style **EMERALD CUT**  
Measurements **17.79 X 12.76 X 7.77 MM**

**GRADING RESULTS**

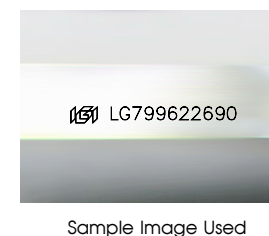
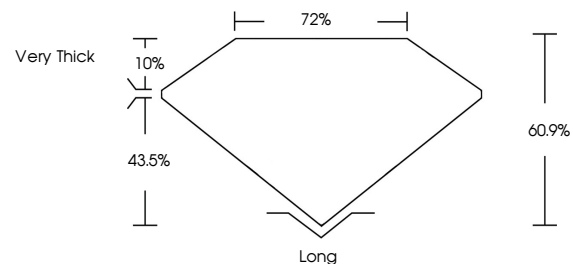
Carat Weight **19.02 CARATS**  
Color Grade **FANCY INTENSE PINK**  
Clarity Grade **VS 1**

**ADDITIONAL GRADING INFORMATION**

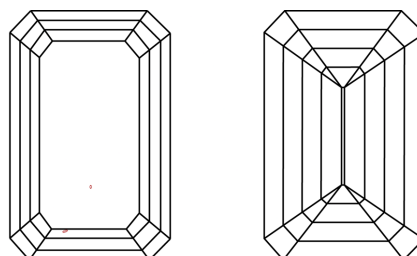
Polish **EXCELLENT**  
Symmetry **VERY GOOD**  
Fluorescence **STRONG**  
Inscription(s) **IGI LG799622690**

Comments: This Laboratory Grown Diamond was created by Chemical Vapor Deposition (CVD) growth process.  
Indications of post-growth treatment.

**PROPORTIONS**



**CLARITY CHARACTERISTICS**



**KEY TO SYMBOLS**

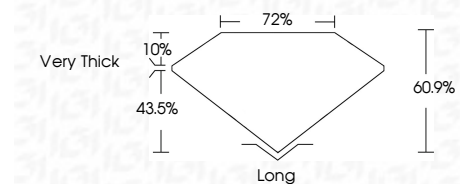
Red symbols indicate internal characteristics.  
Green symbols indicate external characteristics.

**COLOR**

D E F G H I J Faint Very Light Light

**CLARITY**

FL	IF	VS <sup>1-2</sup>	VS <sup>1-2</sup>	SI <sup>1-2</sup>	I <sup>1-3</sup>
Flawless	Internally Flawless	Very Very Slightly Included	Very Slightly Included	Slightly Included	Included



**ADDITIONAL GRADING INFORMATION**

Polish **EXCELLENT**  
Symmetry **VERY GOOD**  
Fluorescence **STRONG**  
Inscription(s) **IGI LG799622690**  
Comments: This Laboratory Grown Diamond was created by Chemical Vapor Deposition (CVD) growth process.  
Indications of post-growth treatment.



May 25, 2026  
IGI Report No. LG799622690  
EMERALD CUT  
19.02 CARATS  
FANCY INTENSE PINK  
VS 1  
60.9%  
72%  
Very Thick  
Long  
EXCELLENT  
VERY GOOD  
STRONG  
IGI LG799622690  
Comments: This Laboratory Grown Diamond was created by Chemical Vapor Deposition (CVD) growth process.  
Indications of post-growth treatment.