



ELECTRONIC COPY

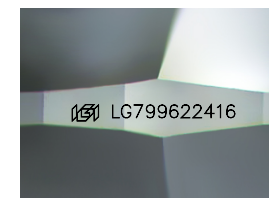
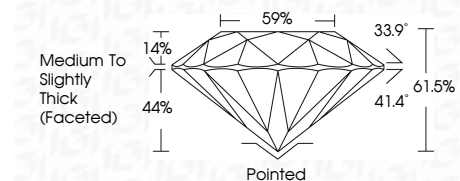
LG799622416
Report verification at igi.org



May 8, 2026
IGI Report Number LG799622416
Description LABORATORY GROWN DIAMOND
Shape and Cutting Style ROUND BRILLIANT
Measurements 8.09 - 8.12 X 4.99 MM

GRADING RESULTS

Carat Weight 2.01 CARATS
Color Grade E
Clarity Grade VVS 2
Cut Grade IDEAL



Sample Image Used

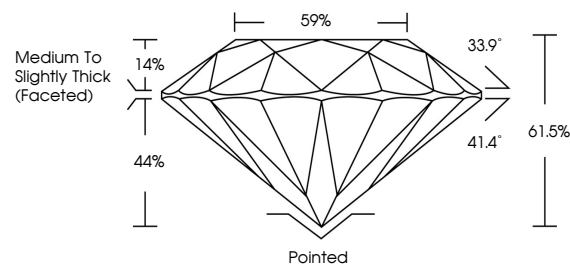
ADDITIONAL GRADING INFORMATION

Polish EXCELLENT
Symmetry EXCELLENT
Fluorescence NONE
Inscription(s) (IGI) LG799622416
Comments: This Laboratory Grown Diamond was created by Chemical Vapor Deposition (CVD) growth process. Type IIa

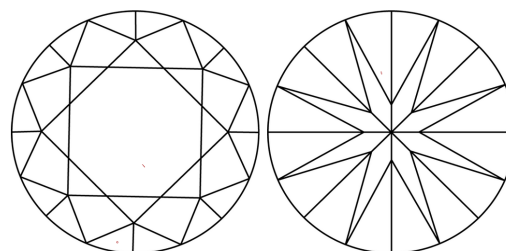


Table with 2 columns: Property and Value. Includes Carat Weight (2.01 CARATS), Color Grade (E), Clarity Grade (VVS 2), Cut Grade (IDEAL), Depth (61.5%), Table (59%), Girdle (Medium To Slightly Thick (Faceted)), and other grading details.

PROPORTIONS



CLARITY CHARACTERISTICS



KEY TO SYMBOLS

Red symbols indicate internal characteristics.
Green symbols indicate external characteristics.

COLOR

D E F G H I J Faint Very Light Light

CLARITY

Table with 6 columns: FL, IF, VS 1-2, VS 1-2, SI 1-2, I 1-3. Row: Flawless, Internally Flawless, Very Very Slightly Included, Very Slightly Included, Slightly Included, Included

