



ELECTRONIC COPY

LABORATORY GROWN DIAMOND REPORT

May 7, 2026
IGI Report Number LG799622111
Description LABORATORY GROWN DIAMOND
Shape and Cutting Style CUSHION BRILLIANT
Measurements 10.99 X 7.53 X 4.50 MM

GRADING RESULTS

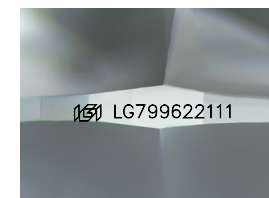
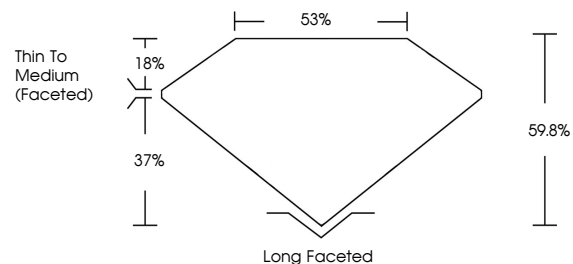
Carat Weight 3.02 CARATS
Color Grade E
Clarity Grade VS 1

ADDITIONAL GRADING INFORMATION

Polish EXCELLENT
Symmetry EXCELLENT
Fluorescence NONE
Inscription(s) IGI LG799622111

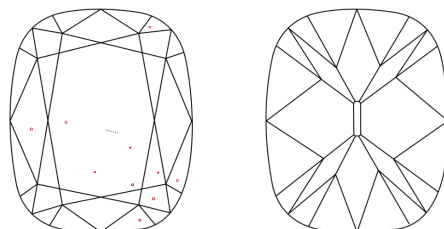
Comments: This Laboratory Grown Diamond was created by Chemical Vapor Deposition (CVD) growth process.
Type IIa

PROPORTIONS



Sample Image Used

CLARITY CHARACTERISTICS



KEY TO SYMBOLS

Red symbols indicate internal characteristics.
Green symbols indicate external characteristics.

COLOR

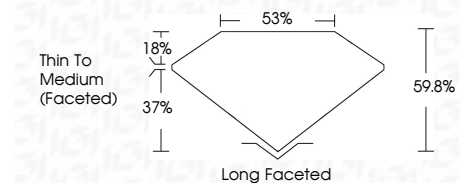
D E F G H I J Faint Very Light Light

CLARITY

FL IF VS 1-2 VS 2-2 SI 1-2 I 1-3
Flawless Internally Flawless Very Very Slightly Included Very Slightly Included Slightly Included Included



May 7, 2026
IGI Report Number LG799622111
Description LABORATORY GROWN DIAMOND
Shape and Cutting Style CUSHION BRILLIANT
Measurements 10.99 X 7.53 X 4.50 MM
GRADING RESULTS
Carat Weight 3.02 CARATS
Color Grade E
Clarity Grade VS 1



ADDITIONAL GRADING INFORMATION

Polish EXCELLENT
Symmetry EXCELLENT
Fluorescence NONE
Inscription(s) IGI LG799622111
Comments: This Laboratory Grown Diamond was created by Chemical Vapor Deposition (CVD) growth process.
Type IIa



May 7, 2026
IGI Report No LG799622111
CUSHION BRILLIANT
3.02 CARATS E
Carat Weight 3.02
Color Grade E
Clarity Grade VS 1
Depth 59.8%
Table 53%
Girdle
Thin To Medium (Faceted)
Culet Long Faceted
Polish EXCELLENT
Symmetry EXCELLENT
Fluorescence NONE
Inscription(s) IGI LG799622111
Comments: This Laboratory Grown Diamond was created by Chemical Vapor Deposition (CVD) growth process.
Type IIa