



**INTERNATIONAL
GEMOLOGICAL
INSTITUTE**

ELECTRONIC COPY

LABORATORY GROWN DIAMOND REPORT

May 11, 2026
 IGI Report Number **LG799622089**
 Description **LABORATORY GROWN DIAMOND**
 Shape and Cutting Style **CUSHION MODIFIED BRILLIANT**
 Measurements **6.67 X 5.14 X 3.67 MM**

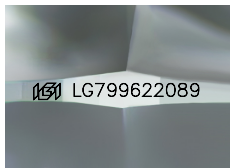
GRADING RESULTS

Carat Weight **0.95 CARAT**
 Color Grade **D**
 Clarity Grade **VVS 1**

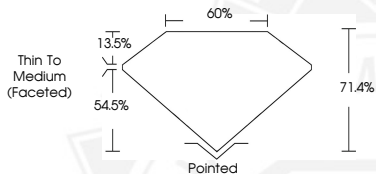
ADDITIONAL GRADING INFORMATION

Polish **EXCELLENT**
 Symmetry **EXCELLENT**
 Fluorescence **NONE**
 Inscription(s) **IGI LG799622089**

Comments: As Grown - No indication of post-growth treatment. This Laboratory Grown Diamond was created by High Pressure High Temperature (HPHT) growth process. Type II



Sample Image Used



May 11, 2026

IGI Report Number **LG799622089**
CUSHION MODIFIED BRILLIANT
LABORATORY GROWN DIAMOND
6.67 X 5.14 X 3.67 MM
 Carat Weight **0.95 CARAT**
 Color Grade **D**
 Clarity Grade **VVS 1**
 Polish **EXCELLENT**
 Symmetry **EXCELLENT**
 Fluorescence **NONE**
 Inscription(s) **IGI LG799622089**

Comments: As Grown - No indication of post-growth treatment. This Laboratory Grown Diamond was created by High Pressure High Temperature (HPHT) growth process. Type II



May 11, 2026

IGI Report Number **LG799622089**
CUSHION MODIFIED BRILLIANT
LABORATORY GROWN DIAMOND
6.67 X 5.14 X 3.67 MM
 Carat Weight **0.95 CARAT**
 Color Grade **D**
 Clarity Grade **VVS 1**
 Polish **EXCELLENT**
 Symmetry **EXCELLENT**
 Fluorescence **NONE**
 Inscription(s) **IGI LG799622089**

Comments: As Grown - No indication of post-growth treatment. This Laboratory Grown Diamond was created by High Pressure High Temperature (HPHT) growth process. Type II



THIS DOCUMENT WAS PRODUCED WITH THE FOLLOWING SECURITY MEASURES: SPECIAL DOCUMENT PAPER, INK SCREENS, WATERMARK, BACKGROUND DESIGNS, HOLOGRAM AND OTHER SECURITY FEATURES NOT LISTED AND DO EXCEED DOCUMENT SECURITY INDUSTRY GUIDELINES.

For terms & conditions and to verify this report, please visit www.igi.org